

Wrexham County Borough Council

Welsh Language Impact Assessment and Supporting Evidence

Prepared in Accordance with Welsh Language Standards 88-92

**This Welsh Language Impact Assessment underpins  
the Council's proposal to establish a new special  
school for pupils with Additional Learning Needs  
(ALN) in Gwersyllt**

March 2026 v2

This document is available in languages other than Welsh or English upon request. It is also available in accessible formats such as large print, Braille, BSL DVD and audio-CD upon request. To make a request for this document in another format or language, please email [SustainableCommunitiesForLearning@wrexham.gov.uk](mailto:SustainableCommunitiesForLearning@wrexham.gov.uk) or write to Access and School Places Team, Education, 3<sup>rd</sup> Floor Lambpit Street, Wrexham, LL11 1AR.

This remains a working document and is subject to change throughout the consultation period.



## **Introduction**

The School Organisation Code (2026) requires Local Authorities to carry out a Welsh Language Impact Assessment to give due consideration to the effects of proposals on the Welsh Language.

This document assesses the impact that the proposal to establish a new special school for pupils with Additional Learning Needs (ALN) in Gwersyllt may have on the Welsh Language. It forms part of several impact assessments including: the Community and Transport. The Council has introduced an Integrated Impact Assessment which considers our duties and commitments in relation to:

- Our Council Priorities (2023-28)
- Our Climate and Ecological Emergency Declaration (2019)
- Our Involvement Strategy (2022-2027)
- Equality Act 2010 (including Public Sector Equality Duty, Socio-Economic Duty and Procurement)
- Welsh Language Measure (Wales) 2011-Policy Making Standards
- Armed Forces Act 2021
- Well-Being of Future Generations (Wales) Act 2015

This assessment pulls together a wide range of relevant Welsh language data sources, statistics, information from Welsh Government and existing Council and Welsh Government policies and legislation. These must be considered in context and alongside mitigating factors as the Council determines whether to proceed with the outlined proposal.

Impact assessments are working documents which are continuously updated considering information from consultation with stakeholders and decisions taken by Elected Members.

## **Proposal Overview:**

Wrexham County Borough Council intends to carry out a formal consultation with stakeholders regarding a proposal to establish a new special school for pupils with Additional Learning Needs (ALN) in Gwersyllt. If approved by the Council's Executive Board in May 2026, the consultation will run from 2 June 2026 to 16 July 2026.

Over recent years, the demand for specialist school places for pupils with ALN has risen in Wrexham. A significant number of pupils who present with social, emotional and mental health (SEMH) needs as their primary area for support require a more specialist setting for their learning and well-being needs to be met.

The new school would be an English-medium special school for pupils aged 3-11. The proposed site would be Noddfa, Dodds Lane, Gwersyllt, LL11 4NT.

## **Why is the Council proposing these changes?**

By bringing this proposal forward, the Council intends to address the rising demand for special school places in the County Borough and aspires to establish a nurturing, supportive and caring learning environment that will help pupils with SEMH needs feel safe and understood.

## **The School Organisation Code 2026**

Welsh Government's School Organisation Code 2026, paragraph 1.10 states that "A Welsh language impact assessment (WLIA) must be undertaken for all proposals". In addition, paragraph 1.11 outlines that "local authorities must consider: the extent to which the proposal would support the targets in the approved Welsh in Education Strategic Plan (WESP); and how the proposal would expand or reduce Welsh language provision, and in the case of the latter, set out why provision will be reduced and must evidence mitigating actions".

In relation to the Welsh language, the consultation document invites consultees to submit their views and opinions on the proposal in their chosen language. As part of the consultation process the Council undertake an online survey to seek views on the proposal, and to gather information on how consultees feel the proposal may impact on the Welsh language and its further development in the area.

The list of consultees includes:

- Welsh Language Commissioner
- Menter Iaith Fflint a Wrecsam
- WCBC Advisory Teachers for Welsh
- WCBC Welsh Language Strategic Officer
- WCBC Welsh in Education Transformation Manager
- Mudiad Meithrin Welsh medium playgroup
- RhAG Rhiant Dros Addysg Gymraeg (Parents for Welsh Medium Education)
- All Welsh schools in Wrexham and their parents, carers, guardians and staff.

## **The Consultation Process**

With reference to the consultation process, all consultation documents, impact assessments and statutory notices are available in both Welsh and English. This allows consultees the option of choosing which language they use to engage with the consultation process. In addition, it is made clear that correspondence is welcomed in both Welsh and English and where replies are required, they will be provided in the same language. All emails to stakeholders to notify them that the consultation is live are bilingual, with the Welsh being displayed above the English.

If the consultation proceeds to the statutory notice stage, these notices will be bilingual and the Welsh will be displayed to the left of the English, in accordance with the Council's compliance note.

The online survey is available in both Welsh and English and asks specific questions regarding the respondents' thoughts and opinions on the positive and negative effects of the proposal on the Welsh language. Appendix B provides more details on the survey questions which have been developed in line with the Welsh Language Standards and in collaboration with the Welsh Language Commissioner.

## **Welsh Language Standards**

Our Welsh Language Standards came into force in 2016 and replaced the Welsh Language Scheme. The standards were introduced as part of the Welsh Language

(Wales) Measure 2011 with the purpose of setting a consistent level of service that Welsh speakers can expect to receive in Wales.

This Welsh Language Impact Assessment and proposal have been prepared in accordance with Welsh Language Standards 88-92 (Appendix A). Standards 88-92 outline that, in policymaking, public organisations must consider what effects (if any) the policy decision or proposal would have on:

- a) Opportunities for persons to use the Welsh language.
- b) Treating the Welsh language no less favourably than the English language.

## **Cymraeg 2050 Strategy**

Cymraeg 2050 is the Welsh Government's strategy for the promotion and facilitation of the use of the Welsh language. It sets out a long-term approach to achieving a target of one million Welsh speakers by 2050. The aim of the strategy is to reach a position where the Welsh language is an integral part of all aspects of everyday life.

Wrexham Council's Welsh in Education Strategic Plan (2022-2031) (WESP) and Welsh Language Promotion Strategy (2022-2027) directly support the Welsh Government's vision and will become the cornerstone of the Council's contribution towards meeting the target outlined in the Welsh Government's strategy.

## **Wrexham's Council Plan 2023 - 2028**

Wrexham's Council Plan (2023-2028) includes the Welsh Language and Culture as a strategic planning principle. It recognises that Wales has two official languages, Welsh and English, and services and information should be equally available in both. Whilst the Council's internal business language is English, all employees are supported and encouraged to develop their Welsh language skills. Services and information that the Council provides are available bilingually. The Council's 'Ensuring a Modern and Resilient Council' objective also reiterates our commitment to the Welsh Language Standards and ensures that we continue to adhere to its requirements.

## **Welsh in Education Strategic Plan (WESP) 2022 - 2031**

The vision: The year 2050: The Welsh language is thriving, the number of speakers has reached a million, and it is used in every aspect of life. Among those who do not speak Welsh there is goodwill and a sense of ownership towards the language and a recognition of its contribution to the culture, society and economy of Wales. Our vision is to secure favourable circumstances throughout the country that support language acquisition and the use of Welsh language skills. We want to see an increase in language transmission in the family, early introduction of Welsh to every child and an education system that provides Welsh language skills for all.

The ALNET Act 2018 requires Local Authorities to keep the arrangements for supporting learners with SEN or ALN within their area under review and consider whether these arrangements are sufficient. The ALNET Act 2018 also includes a statutory requirement to take reasonable steps to create a Welsh medium and bilingual system of support for learners with SEN or ALN.

WESP Outcome 6 focuses on Welsh medium provision for pupils with additional learning needs. It recognises the considerable changes which were rolled out in Wales from September 2021 in relation to the statutory provision required to meet the needs of learners with SEN or ALN.

WESP Outcome 7 focuses on increasing the number of teaching staff able to teach Welsh as a subject and teach through the medium of Welsh.

Having recognised the appetite for Welsh medium education in Wrexham, we are exceptionally pleased at the progress we have made to date and commit to its further development during the coming 10 years.

The Local Authority has adopted a strategic, proactive, and multi-tiered approach to ensuring that children and young people with Additional Learning Needs (ALN) can access high-quality support through the medium of Welsh. This approach spans universal, targeted, and specialist provision, ensuring an equitable and linguistically appropriate offer for all Welsh-medium learners.

At a universal and targeted level, dedicated Inclusion Advisory support is embedded within primary Welsh-medium settings to strengthen inclusive practice and learning environments. This includes direct work with learners, professional coaching for staff, and environmental assessments to ensure that sensory needs are addressed effectively. Bespoke professional learning is also provided to meet the specific contextual needs of each school.

Specialist capacity within the Welsh-medium sector has been intentionally enhanced. A 0.6 Welsh-speaking ALNCo has been seconded to the Welsh Primary Resource Provision, supported by a Welsh-language Occupational Health Therapist. Together, they deliver targeted training and work directly with teaching staff to ensure that learning environments are fully aligned with the sensory and educational needs of pupils in specialist provision. A comprehensive review of the Secondary Resource Provision has also been undertaken, resulting in a jointly developed action plan that includes further investment in both learning environments and specialist resources.

To ensure continuity of Welsh-medium provision for learners educated other than at school (EOTAS) due to medical needs, the Local Authority provides first-language Welsh teaching and support staff, enabling learners to maintain linguistic continuity during periods of absence. Workforce capacity has been further strengthened through the recruitment of two first-language Welsh ALN Officers, ensuring that children, young people, and their families can access statutory ALN processes in Welsh. The Local Authority is also investing in future workforce sustainability by supporting a first-language Welsh trainee Educational Psychologist, ensuring continued specialist bilingual capacity in the long term. In addition, funding has been secured to appoint a literacy support specialist to join the Literacy, Language and Speech Outreach Team. This will enhance targeted Welsh-medium literacy intervention capacity and strengthen early identification and support for learners with emerging communication, speech, and literacy needs.

## **Welsh Language Promotion Strategy**

Under Welsh Language Standard 145 local authorities had to develop and implement 5-year promotion strategies, working with partner organisations to

promote the Welsh language and to facilitate the use of the Welsh language more widely in their respective areas. Amongst other matters the strategy had to include the following:

- A target (in terms of the percentage of speakers in the area) for increasing or maintaining the number of Welsh speakers in the area by the end of the 5-year period concerned.
- A statement setting out how they intend to reach that target; and conduct a review of the strategy and publish a revised version on their website within 5 years of publishing a strategy (or of publishing a revised strategy).

Welsh-medium education, whether in the form of full Welsh-medium provision via Welsh schools, or the teaching of Welsh as a second language in English-medium schools, directly supports this aim and intrinsically links this strategy with the WESP.

## Welsh Language Skills in Wrexham and Gwersyllt

### Welsh Language Profile - Wrexham (Census 2021)

Welsh Language Skill	Percentage
Can speak, read or write Welsh	14.5%
Can understand spoken Welsh only	5.4%
Cannot speak Welsh	87.8%
Can Speak Welsh	12.2%
No skills in Welsh	80.1%

According to the 2021 Census, over half of the population of Wrexham were born in Wales (67.9%). 14.5% of people in Wrexham can speak, read or write Welsh. The ability to speak, read and write Welsh is at its highest in the rural ward of Rhosllanerchrugog and Johnstown South (23.1%) and is at its lowest in the rural ward of Bangor on Dee, Overton and Penley (9.4%). 12.2% of the population of Wrexham can speak Welsh compared to a Wales average of 17.8%.

### Welsh Language Profile - Gwersyllt South (Census 2021)

Welsh Language Skill	Percentage
Can speak, read or write Welsh	14.3%
Can understand spoken Welsh only	6.1%
Cannot speak Welsh	87.9%
Can Speak Welsh	12.1%
No skills in Welsh	79.5%

The proposed site for the new special school is within the Gwersyllt South ward. According to the 2021 Census, 14.3% of people in Gwersyllt South can speak, read or write Welsh. This is slightly lower than the Wrexham average of 14.5%. 12.1% of the population of Gwersyllt South can speak Welsh. This is slightly lower than the Wrexham average of 12.2% and lower than the Wales average of 17.8%. Gwersyllt South therefore represents a lower-use Welsh-language community than other wards in Wrexham.

## **Welsh Annual Population Survey (APS) - Wrexham Trend Data**

The APS provides rolling estimates of Welsh-language ability:

- APS data typically places Wrexham's Welsh-speaking population between 18% and 20%. This is slightly higher than the Census figure mentioned above due to methodological differences.
- APS trends for Wrexham show stable or slightly increasing adult Welsh-language ability, but declining child/youth ability. This mirrors 2021 Census findings.

## **Areas of Linguistic Sensitivity**

According to the proposals map, the Welsh Language Sensitive Areas for Wrexham are the communities of Ceiriog Uch, Coedpoeth, Glyntraian, Llansantffraid Glyn Ceiriog, Minera, Penycae and Rhosllanerchrugog. As a result, any windfall developments within these areas will be subject to a Welsh Language Impact Assessment by the Local Authority when a particular threshold is met:

- All residential applications for 5 or more units in the Ceiriog Valley (Ceiriog Ucha, Glyntraian, Llansantffraid Glyn Ceiriog) and Minera.
- All residential applications for 15 or more units elsewhere within the Welsh Language Sensitive Areas.

Where the Welsh Language Impact Assessment demonstrates that the development may have an adverse impact on the language, proposals must be accompanied by a Welsh Language Action Plan setting out the measures to be taken to protect, promote and enhance the Welsh Language and culture. The implementation of any measures identified within the Welsh Language Action Plan shall be secured either by planning conditions or, where necessary, by planning obligations.

As outlined, Gwersyllt is not designated as a high-sensitivity or a high Welsh-speaking area according to the Census 2021 data and the ALS framework. However, learners who attend the new special school could come from any area within Wrexham and therefore, the local authority has an obligation to consider countywide linguistic effects, regardless of whether the site for the new special school is in a high-sensitivity area or not. The new provision aims to offer equality and parity of choice to parents and learners who want Welsh medium education within Wales, and within a reasonable distance from their home as residents of Wrexham. It will mean that our learners can remain in Wales for their education, where they will be able to access the Welsh curriculum and be fully immersed in Welsh language, Welsh culture and heritage, which will be made fully accessible.

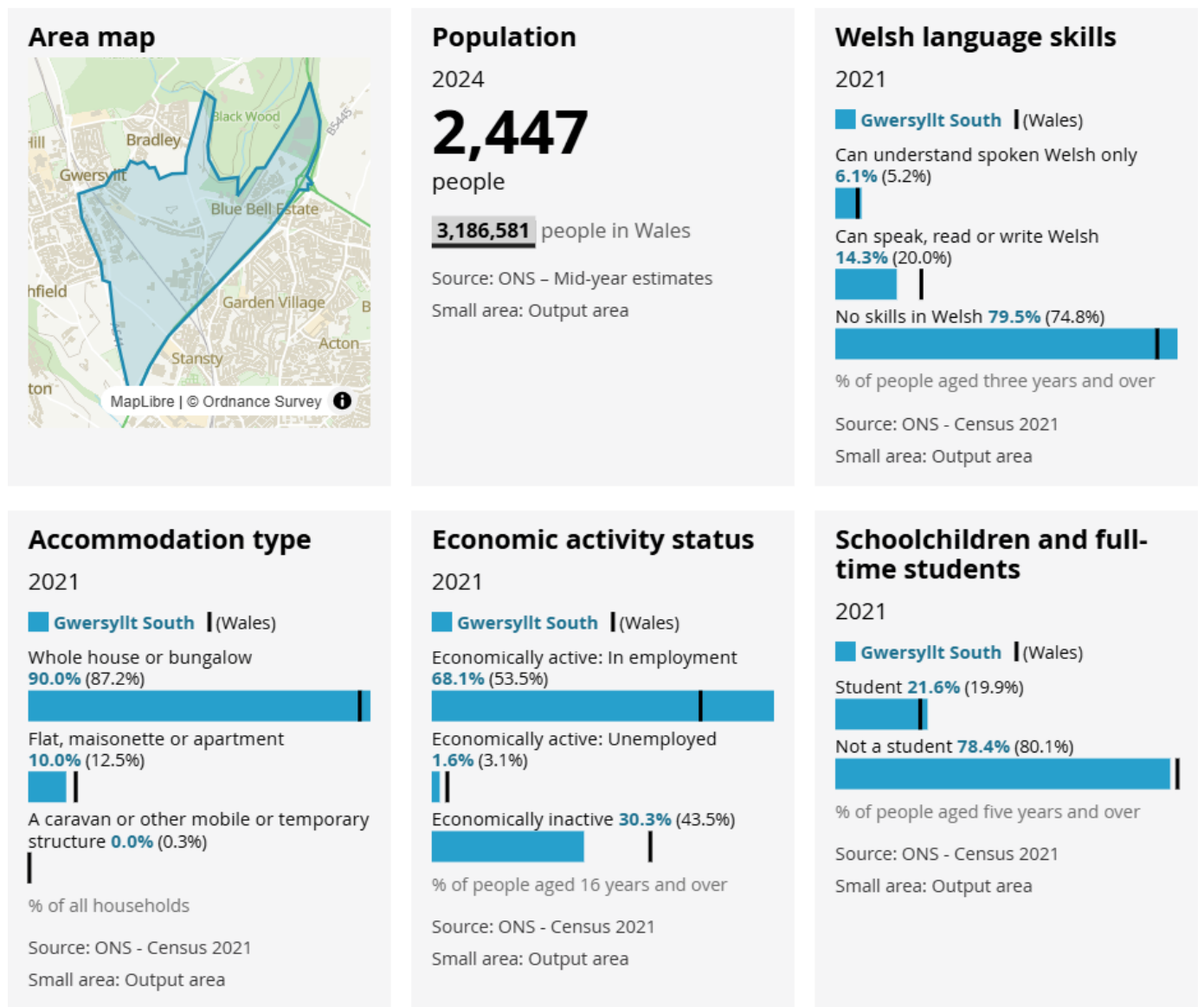
## **Socio-Economic Considerations**

Based on the Welsh Index of Multiple Deprivation (WIMD) 2025 published in November 2025, Wrexham contains 85 LSOAs, which accounts for 4.4% of the 1,917 total LSOAs in Wales. Of the 0%-10% most deprived LSOAs in Wales (the top 191 most deprived areas), 6 are within Wrexham. These 6 areas account for 7.1% of all LSOAs within the Wrexham Local Authority. This group of 6 areas accounts for 0.3% of the total LSOAs in Wales.

## Area Profile - Gwersyllt South

The new school would be located within the Gwersyllt South Ward. The picture below shows the area map and information on population, Welsh language skills, accommodation type, economic activity and the percentage of school children and full-time students. For further information on the Gwersyllt South Census Data, please visit [Custom Area Profile-Gwersyllt South](#) on the Office for National Statistics website.

### Gwersyllt South



The picture shows the area map and information on population, Welsh language skills, accommodation type, economic activity and the percentage of school children and full-time students. Other wards in the locality include Gwersyllt North, Gwersyllt East and Gwersyllt West.

Key socio-economic factors for the Gwersyllt area include:

- Regeneration: Gwersyllt is part of the West Wrexham urban village wards.
- Health: There is a health gap between deprived areas in Wrexham and more affluent suburbs, with some residents facing a lower life expectancy and a higher likelihood of long-term illness.
- Housing: The area has seen new housing developments, which aims to provide a mix of market and affordable housing to support local needs and improve sustainability.
- Economic Strategy: The area is part of a broader strategy aimed at economic restructuring, improving prosperity and tackling social exclusion.

For further information on the other wards within the locality, please visit [Explore Local Statistics](#) on the Office for National Statistics website.

## Well-Being of Future Generations (Wales) Act 2015

The Integrated Impact Assessment linked to this proposal (IIA794127862) presents information and assurance about how, when taking decisions, we have considered our duties and commitments in relation to several policies, strategies and legislation, including the Well-being of Future Generations (Wales) Act 2015. The Well-being of Future Generations Act places a duty on public bodies in Wales to carry out sustainable development.

## Current ALN Provision in Wrexham

In Wrexham, there are currently 39 resourced provision units based in our primary and secondary schools (Appendix E). There are also 3 designated special schools, 3 pupil referral units and an outreach provision. Of the 39 resourced provision units we have in Wrexham, 3 are designated as Welsh-medium.

### Welsh-Medium Primary and Secondary Resourced Provision Units

School	Type of Provision	Language Category	Age Range
Ysgol Bodhyfryd (Primary)	Resourced Provision Generic	WM	Foundation Phase (3-7)
Ysgol Bodhyfryd (Primary)	Resourced Provision Generic	WM	KS2 (7-11)
Ysgol Morgan Llwyd (Secondary)	Resourced Provision Learning and Nurture	WM	11-18

The 3 designated special schools in Wrexham are St Christopher’s Special School, Ysgol Cae’r Gwenyn and a New Special School (currently known as ‘Copa’) which will be opening shortly in the Plas Madoc area.

### **Special Schools in Wrexham**

<b>School</b>	<b>Type of Provision</b>	<b>Language Category</b>	<b>Age Range</b>
St Christopher’s School	Special School	EM	4-19
Ysgol Cae’r Gwenyn	Special School	EM	3-7
New Special School (Plas Madoc)	Special School	EM	11-16

As demonstrated, the Council has a strong track record of meeting a wide range of additional learning needs (ALN) with a continuum of specialist provision. Following an extensive review of the resourced provision units within Wrexham, a gap has been identified to provide a specialist provision for learners who present with SEMH needs. This is a driving factor for bring this proposal forward to ensure that the local authority can continue to be responsive to a widening range of needs.

### **Welsh-Medium Education Provision in Wrexham**

There are currently eight Welsh-medium primary schools, one dual-stream primary school and one 11-18 Welsh-medium secondary school within Wrexham City.

A high percentage of pupils currently attending Welsh medium schools in Wrexham come from predominantly English-speaking homes. Bilingualism is introduced at the earliest opportunity, and the Local Authority is committed to ensuring that Welsh-medium education will be maintained and developed as the child/young person progresses.

As outlined in the WESP, “the further development and expansion of Welsh-medium education remains our vision and we recognise the importance of creating opportunities for all Wrexham pupils to become bilingual so that they emerge from our education system, proud of their identity and confident in using both languages” (WESP, Page 5). Over recent years, the Council has strived to expand Welsh medium education across the county to ensure that there are enough places for the pupils of Wrexham to access Welsh medium education should they wish to do so.

### **Secondary Welsh Medium Education**

The Local Authority operates a ‘Trochi’ Programme for late comers to Welsh-medium secondary education. This programme enables pupils to receive intensive Welsh

language support in Ysgol Morgan Llwyd; Wrexham's Welsh-medium secondary school. The programme begins during the second half of the summer term, whilst the pupils are still in Year 6, and continues throughout future year groups where required. Based on the success of the Trochi Programme we have actively pursued funding grants to build on these successes.

The Local Authority have also increased the available capacity at Ysgol Morgan Llwyd by 240 places by creating a stand-alone sixth form provision under the Sustainable Communities for Learning Programme and this work was completed in May 2019. In the future, further consultation will be required to formally increase the admission number, utilising the space freed by the new sixth form provision.

## **Welsh Medium Education Projects - Background**

### **Ysgol Plas Coch CP**

In 2016, a £1,000,000 modernisation scheme was implemented at the school to permanently increase the number of Welsh medium places from 210 to 315. An extension to the school provided three new permanent classrooms to replace temporary accommodation.

### **Ysgol Bro Alun CP**

In 2013, we opened a new 210 place Welsh medium school in Wrexham, Ysgol Bro Alun. This school was so successful in drawing pupils we have since expanded this site to accommodate 315 places as of September 2019. The project offered opportunity for continued growth, offered a greater choice to parents and met the desired increase in demographic spread of Welsh medium schools.

### **Ysgol ID Hooson**

Alongside the successful expansion at Ysgol Bro Alun CP, the Council has also been successful in securing an outline funding bid, under the Welsh Government's Welsh Capital funding stream, to expand provision at Ysgol ID Hooson in Rhosllanerchrugog. Initially, this was for an extension to replace existing mobiles on site. Since this successful bid, the Council has requested additional capital funding to permanently extend the existing building with additional classrooms. The scheme would allow for considerable alterations to accommodate a studio hall, a larger relocated kitchen and extension to the Foundation Phase areas. Welsh Government are providing 100% grant funding for this project. The extension will provide permanent spaces for learning to replace temporary accommodation and will also house wrap around childcare. This creates further capacity and provides the opportunity for Ysgol ID Hooson to become a 420 primary school if required.

### **Ysgol Llan Y Pwll**

The Local Authority has increased the geographic spread of Welsh medium schools in the county by opening a new Welsh medium school at the old Borrass Infants site. The project involved extending and extensively remodelling the site to accommodate a new Welsh medium school with a capacity of 210 and a 30-place nursery. Funding was also secured through the Childcare grant, and a new Childcare provision was created on site. By increasing the geographic spread of Welsh medium provision, the Council has ensured that Welsh medium education is increasingly accessible to parents and has also ensured that the time pupils need to travel to a local Welsh

medium school is reduced. Ysgol Llan y Pwll opened in September 2022 for reception and nursery children. The aims of the above projects were:

- To continue to generate greater access and wider participation within Welsh medium at a primary level for Wrexham learners.
- To continue increased participation and retention within the Welsh medium primary sector.
- To address the demand for Welsh medium places in Wrexham.
- To increase the demographic spread of Welsh medium primary provision in Wrexham.
- To ensure increased efficiency and effectiveness to provide the best value for money.
- Supporting the Welsh Government's vision and strategy of a million Welsh speakers by 2050.
- Support the aims and objectives within Wrexham's Welsh Language Promotion Strategy (2022-2027).

## Assessment of Potential Impacts on the Welsh Language

The impact of the proposal has been considered, as shown in the table below. If an impact is anticipated to be beneficial to the Welsh language, it has been identified as positive. If an impact is anticipated to be potentially detrimental to the Welsh language, it has been identified as negative and if it does not significantly impact the Welsh language it has been identified as neutral.

Description of Impact	Assessment of Impact	Comment/Link to WESP Outcomes
Impact on Welsh-medium education	Neutral/Negative/ Positive	<p>The proposal does not alter the existing structure of Welsh-medium education. No Welsh-medium school is being closed because of the proposal.</p> <p>By establishing an English-medium special school, there is a risk of reinforcing the absence of a Welsh-medium special school in Wrexham. Please see the mitigation measures section below for an outline of our long-term plan to address this.</p> <p>As with any new English-medium school in Wales, there is an opportunity to grow the Welsh language in the learning environment and the wider community with incidental Welsh, bilingual signage and timetables and ample cultural enrichment activities and trips.</p>

Impact on Welsh-speaking pupils with ALN	Neutral/Negative	<p>Each pupil is assessed and where a need is identified, reasonable steps are made to ensure that pupils can access their education through the medium of Welsh. This would be the same for the new special school.</p> <p>There is a potential that Welsh-speaking pupils with ALN may experience linguistic discontinuity if they are placed in an English-medium setting. To mitigate this, the local authority would ensure that the setting is the best place for the learners' needs to be met and would take reasonable steps to ensure that the learners' and parents' language preferences are adhered to.</p>
Impact on Welsh-language workforce.	Positive	<p>There is an opportunity to develop a bilingual workforce within any new school. A staff recruitment drive would aim to recruit more Welsh speaking staff to ensure that learners with ALN have access to Welsh medium education.</p> <p>The opening of our new Trochi unit has also provided the opportunity to use the immersion provision to upskill staff. Staff are accessing confidence building training programmes at our primary language acquisition unit at Ysgol Min y Ddol. We intend to use the new Trochi unit at Ysgol Morgan Llwyd to expand this provision and upskill English-medium teachers to build their confidence and inspire them to transfer</p>

		their enthusiasm to the learners, thus contributing to an interest in the language.
Impact on community use of Welsh	Neutral/Positive Positive	As the proposal concerns opening a new English-medium special school, the use of Welsh in the community would be unaffected. There is a potential to increase the incidental use of Welsh with the pupils in the school and in the community if a bilingual workforce is realised.

### Conclusion and Summary

This Welsh Language Impact Assessment aimed to explore the extent to which the proposal supports the WESP targets and how the proposal could expand or reduce Welsh-medium provision. As this proposal relates to establishing a new English-medium special school, the local authority recognise that there will be slightly less contributions to Council targets in this instance and recognises that there is more work to be undertaken to address shortfalls in Welsh-medium ALN provision. However, we are confident that our work on the WESP objectives, staff recruitment strategy and the wider strategic ALN review will mitigate any potential impacts on the Welsh language from the proposal as we continue to promote and raise the profile of Welsh-medium education.

The Local Authority has adopted a strategic, proactive, and multi-tiered approach to ensuring that children and young people with Additional Learning Needs (ALN) can access high-quality support through the medium of Welsh. This approach spans universal, targeted, and specialist provision, ensuring an equitable and linguistically appropriate offer for all Welsh-medium learners.

At a universal and targeted level, dedicated Inclusion Advisory support is embedded within primary Welsh-medium settings to strengthen inclusive practice and learning environments. This includes direct work with learners, professional coaching for staff, and environmental assessments to ensure that sensory needs are addressed effectively. Bespoke professional learning is also provided to meet the specific contextual needs of each school.

Specialist capacity within the Welsh-medium sector has been intentionally enhanced. A 0.6 Welsh-speaking ALNCo has been seconded to the Welsh Primary Resource Provision, supported by a Welsh-language Occupational Health Therapist. Together, they deliver targeted training and work directly with teaching staff to ensure that learning environments are fully aligned with the sensory and educational needs of pupils in specialist provision. A comprehensive review of the Secondary Resource Provision has also been undertaken, resulting in a jointly developed action plan that includes further investment in both learning environments and specialist resources.

To ensure continuity of Welsh-medium provision for learners educated other than at school (EOTAS) due to medical needs, the Local Authority provides first-language Welsh teaching and support staff, enabling learners to maintain linguistic continuity during periods of absence.

Workforce capacity has been further strengthened through the recruitment of two first-language Welsh ALN Officers, ensuring that children, young people, and their families can access statutory ALN processes in Welsh. The Local Authority is also investing in future workforce sustainability by supporting a first-language Welsh trainee Educational Psychologist, ensuring continued specialist bilingual capacity in the long term. In addition, funding has been secured to appoint a literacy support specialist to join the Literacy, Language and Speech Outreach Team. This will enhance targeted Welsh-medium literacy intervention capacity and strengthen early identification and support for learners with emerging communication, speech, and literacy needs.

The Local Authority continues to work collaboratively with regional partners to share best practice and expand the overall quality, reach, and coherence of Welsh-medium ALN provision across the region.

## Appendix A - Relevant Welsh Language Standards

Standard Number	Class of Standard	Standard	Date
88	Policy Making	<p>When you formulate a new policy, or review or revise an existing policy, you must consider what effects, if any (whether positive or adverse), the policy decision would have on:</p> <ul style="list-style-type: none"> <li>a) opportunities for persons to use the Welsh language, and</li> <li>b) treating the Welsh language no less favourably than the English language.</li> </ul>	30/03/2016
89	Policy Making	<p>When you formulate a new policy, or review or revise an existing policy, you must consider how the policy could be formulated (or how an existing policy could be changed) so that the policy decision would have positive effects, or increased positive effects, on:</p> <ul style="list-style-type: none"> <li>a) opportunities for persons to use the Welsh language, and</li> <li>b) treating the Welsh language no less favourably than the English language.</li> </ul>	30/03/2016
90	Policy Making	<p>When you formulate a new policy, or review or revise an existing policy, you must consider how the policy</p>	30/03/2016

		<p>could be formulated (or how an existing policy could be changed) so that the policy decision would not have adverse effects, or so that it would have decreased adverse effects, on:</p> <ul style="list-style-type: none"> <li>a) opportunities for persons to use the Welsh language, and</li> <li>b) treating the Welsh language no less favourably than the English language.</li> </ul>	
<b>91</b>	<b>Policy Making</b>	<p>When you publish a consultation document which relates to a policy decision, the document must consider, and seek views on, the effects (whether positive or adverse) that the policy decision under consideration would have on:</p> <ul style="list-style-type: none"> <li>a) opportunities for persons to use the Welsh language, and</li> <li>b) treating the Welsh language no less favourably than the English language.</li> </ul>	30/03/2016
<b>92</b>	<b>Policy Making</b>	<p>When you publish a consultation document which relates to a policy decision the document must consider, and seek views on, how the policy under consideration could be formulated or revised so that it would have positive effects, or</p>	30/03/2016

		increased positive effects, on <ul style="list-style-type: none"><li>a) opportunities for persons to use the Welsh language, and</li><li>b) treating the Welsh language no less favourably than the English language.</li></ul>	
--	--	---	--

## **Appendix B - Welsh Language Consultation Questions**

The following questions included in the consultation ask about the potential impact on the Welsh language. These questions have been developed in line with the Welsh Language Standards and in collaboration with the Welsh Language Commissioner.

1. In your opinion, what positive effects would the policy decision under consideration have on:
  - Opportunities for persons to use the Welsh language, and
  - Treating the Welsh language no less favourably than the English language?
2. In your opinion, what adverse effects would the policy decision under consideration have on:
  - Opportunities for persons to use the Welsh language, and
  - Treating the Welsh language no less favourably than the English language?
3. How do you think the policy under consideration could be formulated or revised so that it would have positive effects, or more positive effects on:
  - Opportunities for persons to use the Welsh language, and
  - Treating the Welsh language no less favourably than the English language.
4. How do you think the policy under consideration under consideration could be formulated or revised so that it would not have adverse effects, or less adverse effects on:
  - Opportunities for persons to use the Welsh language, and
  - Treating the Welsh language no less favourably than the English language.

## **Appendix C - Relevant Policies and Legislation**

Below is a hyperlinked list of Council, Welsh Government and other relevant policies, legislation and information, as noted throughout this assessment.

### **Wrexham County Borough Council Welsh Language Policies and Strategies**

- [Wrexham Welsh in Education Strategic Plan](#)
- [Wrexham Welsh Language Promotion Strategy](#)
- [Wrexham Welsh Language Standards Compliance Notice](#)
- [Local Planning Guidance Note 31 The Welsh Language and Welsh Communities](#)

### **Welsh Government Legislation and Regulations**

- [Welsh-Medium and Bilingual Education](#)
- [Welsh Language \(Wales\) Measure 2011](#)
- [Welsh in Education Strategic Plans \(Wales\) Regulations 2019](#)
- [Wellbeing of Future Generations Act 2015 Guidance](#)
- [Cymraeg 2050](#)
- [Planning Policy Wales: TAN 20](#)

### **Other Information**

- [Wrexham Custom Area Profile-ONS](#)
- [Gwersyllt South Custom Area Profile-ONS](#)
- [Welsh Index of Multiple Deprivation: 2025](#)

## Appendix D - Welsh Language Partner Organisations

This is a list of organisations who support and promote the Welsh language and Welsh-medium education, either voluntarily or through their corporate governance and/or strategic role in ensuring compliance with legislative requirements.

Many are partners on Wrexham County Borough Council Welsh in Education Strategic Language Forum.

- [Menter Iaith Fflint a Wrecsam](#)
- [Mudiad Ysgol Meithrin](#)
- [Wrexham Public Services Board](#)
- [Rhieni Dros Addysg Gymraeg](#)
- [Urdd Gobaith Cymru-Fflint a Wrecsam](#)
- [Estyn](#)
- [Welsh Language Commissioner](#)
- [Cymdeithas yr Iaith Gymraeg \(the Welsh Language Society\)](#)

## Appendix E - Resourced Provisions and Special Schools in Wrexham

### Primary Resourced Provisions

School	Type of Provision	Planned Places (as of January 2026)	Language Category	Age Range
St Mary's CIW VA School, Brymbo	Resourced Provision Generic	11	EM	Foundation Phase / KS2
Ysgol Heulfan	Resourced Provision SLD, Social Communication	10	EM	Foundation Phase
Ysgol Heulfan (Y Canol)	Resourced Provision Complex Needs (PMLD SLD)	25	EM	Foundation Phase / KS2
Ysgol Yr Hafod, Johnstown	Resourced Provision Generic	11	EM	Foundation Phase / KS2
Park Primary School	Resourced Provision Generic	11	EM	KS2
Park Primary School	Resourced Provision Generic	8	EM	Foundation Phase
The Rofft School	Resourced Provision Social Communication	22	EM	Foundation Phase / KS2
Rhosymedre Primary School	Resourced Provision Generic	11	EM	KS2
Rhosymedre Primary School	Resourced Provision BESD	8	EM	Foundation Phase / KS2
Rhosymedre Primary School	Resource Provision PMed	6	EM	Foundation Phase

Acton Park Primary School	Resourced Provision Speech and Language	10	EM	Foundation Phase
Acton Park Primary School	Resourced Provision Speech and Language	13	EM	KS2
Alexandra School	Resourced Provision Complex Needs, SLD	8	EM	Foundation Phase
Alexandra School	Resourced Provision Social Communication	10	EM	Foundation Phase
Alexandra School	Resourced Provision Social Communication	11	EM	KS2
Alexandra School (Assessment Centre)	Resourced Provision Assessment	24	EM	Foundation Phase
St Anne's Catholic Primary School	Resourced Provision Generic	8	EM	Foundation Phase / KS2
Ysgol Bodhyfryd	Resourced Provision Generic	11	WM	KS2
Ysgol Bodhyfryd	Resourced Provision Generic	8	WM	Foundation Phase
Gwenfro Primary School	Resourced Provision Generic	8	EM	Foundation Phase
Gwenfro Primary School	Resourced Provision Generic	11	EM	KS2
Hafod Y Wern Primary School	Resourced Provision Generic	11	EM	Foundation Phase / KS2

St Giles CIW VC Primary School	Resourced Provision Generic	11	EM	KS2
Borras Park CP School	Resourced Provision Hearing Impaired	8	EM	Foundation Phase / KS2
Ysgol Maes Y Mynydd	Resource Provision Social Communication	8	EM	Foundation Phase
Hafod Y Wern Primary School	Resource Provision Social Communication	10	EM	Foundation Phase
Gwenfro Primary School	Resource Provision Social Communication/ Severe Learning Difficulties	8	EM	Foundation Phase

### Secondary Resourced Provisions

School	Type of Provision	Planned Places	Number on roll (as of January 2026)	Language Category	Age Range
Ysgol Bryn Alyn	Resourced Provision Learning	15	14	EM	11-16
The Maelor School	Resourced Provision Specific Literacy Difficulties	10	11	EM	11-18
The Maelor School	Resourced Provision Social Communication	10	12	EM	11-18
Ysgol Y Grango	Resourced Provision Learning	18	16	EM	11-16
Darland High School	Resourced Provision Social Communication	44	45	EM	11-16

Ysgol Rhiwabon	Resourced Provision Learning	8	18	EM	11-16
Ysgol Morgan Llwyd	Resourced Provision Learning and Nurture	16	20	WM	11-18
St Joseph's High School	Resourced Provision Learning	20	22	EM	11-16
Rhosnesni High School	Resourced Provision Learning	24	19	EM	11-16
Rhosnesni High School	Resourced Provision Speech & Language	14	17	EM	11-16
Rhosnesni High School	Resourced Provision Hearing Impaired	8	5	EM	11-16
Ysgol Clywedog	Resourced Provision Nurture	10	10	EM	11-16
Ysgol Clywedog	Resourced Provision Learning	11	8	EM	11-16

### Special Schools

School	Type of Provision	Number on Roll	Language Category	Age Range
St Christopher's School	Special School	335	EM	4-19
Ysgol Cae'r Gwenyn	Special School	51	EM	3-7

## Appendix F - Evaluation of Policy Documentation and Legislation

Policy Document and Legislation	Summary	Requirements of the School Organisation Code 2026	Comments
<p>Welsh in Education Strategic Plan (WESP) Wrexham 2022-2031</p>	<p>The requirement to publish a Welsh in Education Strategic Plan (WESP) is set out in the School Standards and Organisation (Wales) Act 2013. This requirement includes a local authority's proposals and targets to:</p> <ul style="list-style-type: none"> <li>i. Improve the planning of the provision of Welsh medium education in its area.</li> <li>ii. Improve the standards of Welsh medium education and of the teaching of Welsh in its area.</li> </ul> <p>Welsh Government's strategy is to have one million Welsh speakers by 2050 (Cymraeg 2050: A million Welsh speakers). New regulations make provision for local authorities to prepare a ten-year WESP with effect from September 2022, and this will effectively become the cornerstone of the Council's contribution towards Welsh Government's strategy.</p>	<p>Demonstrate links to the targets in the WESP and any future actions that will be needed in consequence of the change to continue to comply with the plan / meet targets in the plan.</p>	<p>This proposal links to the following WESP outcomes:</p> <p>Outcome 6: <i>An increase in the provision of Welsh-medium education for pupils with additional learning needs (ALN) (in accordance with the duties imposed by the Additional Learning Needs and Education Tribunal (Wales) Act 2018.</i></p> <p>Outcome 7: <i>Increase the number of teaching staff able to teach Welsh (as a subject) and teach through the medium of Welsh.</i></p> <p>The Welsh Language Impact Assessment seeks to explore the extent to which the proposal supports the WESP targets and how the proposal could expand or reduce Welsh medium provision. An initial assessment has found that the proposal is likely to have a positive effect on the existing commitment to and use of the Welsh language but recognises there is more work to be done to address shortfalls in Welsh medium provision for ALN learners and to upskill staff competency to mitigate any negative impact.</p> <p>The Local Authority has adopted a strategic, proactive, and multi-tiered approach to ensuring that children and young people with Additional Learning Needs (ALN) can access high-quality support through the medium of Welsh. This approach spans universal, targeted, and</p>

		<p>specialist provision, ensuring an equitable and linguistically appropriate offer for all Welsh-medium learners.</p> <p>At a universal and targeted level, dedicated Inclusion Advisory support is embedded within primary Welsh-medium settings to strengthen inclusive practice and learning environments. This includes direct work with learners, professional coaching for staff, and environmental assessments to ensure that sensory needs are addressed effectively. Bespoke professional learning is also provided to meet the specific contextual needs of each school.</p> <p>Specialist capacity within the Welsh-medium sector has been intentionally enhanced. A 0.6 Welsh-speaking ALNCo has been seconded to the Welsh Primary Resource Provision, supported by a Welsh-language Occupational Health Therapist. Together, they deliver targeted training and work directly with teaching staff to ensure that learning environments are fully aligned with the sensory and educational needs of pupils in specialist provision. A comprehensive review of the Secondary Resource Provision has also been undertaken, resulting in a jointly developed action plan that includes further investment in both learning environments and specialist resources.</p> <p>To ensure continuity of Welsh-medium provision for learners educated other than at school (EOTAS) due to medical needs, the Local Authority provides</p>
--	--	--

			<p>first-language Welsh teaching and support staff, enabling learners to maintain linguistic continuity during periods of absence.</p> <p>Workforce capacity has been further strengthened through the recruitment of two first-language Welsh ALN Officers, ensuring that children, young people, and their families can access statutory ALN processes in Welsh. The Local Authority is also investing in future workforce sustainability by supporting a first-language Welsh trainee Educational Psychologist, ensuring continued specialist bilingual capacity in the long term. In addition, funding has been secured to appoint a literacy support specialist to join the Literacy, Language and Speech Outreach Team. This will enhance targeted Welsh-medium literacy intervention capacity and strengthen early identification and support for learners with emerging communication, speech, and literacy needs.</p>
Welsh Language (Wales) Measure 2011	Made provision for the official status of the Welsh language in Wales and created a new legislative framework for the Welsh language. Five Welsh Language Standards Regulations have been adopted since March 2015, placing a duty on local authorities, national parks, Welsh Ministers and certain organisations to promote the Welsh language. The regulations specify service delivery	Demonstrate compliance with the Welsh Language Policy Making Standards (88-92 Appendix A) and in general with the relevant LA Standards Compliance Notice.	<p>The Council's Welsh Language Scheme was replaced on 30 March 2016 with Welsh Language Standards. These were introduced as part of the Welsh Language (Wales) Measure 2011 with the purpose of setting a consistent level of service that Welsh speakers can expect to receive in Wales. The standards were drafted with the aim of:</p> <ul style="list-style-type: none"> <li>• improving the services Welsh speakers can expect to receive from organisations in Welsh.</li> <li>• increasing the use people make of Welsh-language services.</li> </ul>

	<p>standards, policy-making standards, operational standards, and record keeping standards for the organisations. The aim of the Welsh Language Standards Regulations is to:</p> <ol style="list-style-type: none"> <li>i. improve the services Welsh speakers can expect to receive from organisations in Welsh.</li> <li>ii. increase the use people make of Welsh language services.</li> <li>iii. make it clear to organisations what they need to do in terms of the Welsh language.</li> <li>iv. ensure that there is an appropriate degree of consistency in terms of the duties placed on bodies in the same sector.</li> </ol>		<ul style="list-style-type: none"> <li>• making it clear to public bodies what they need to do in terms of the Welsh language.</li> <li>• ensuring that there is an appropriate degree of consistency in terms of the duties placed on bodies in the same sectors.</li> </ul> <p>This proposal links to Standards 88-92 'Policy Making'. A list of the relevant Standards is contained in Appendix A.</p> <p>The suite of consultation documentation, including the impact assessments and survey questions pertaining to the Welsh Language, ensure compliance with the Welsh Language Standards 88-92. The survey questions in Appendix B were developed in collaboration with the Welsh Language Commissioner. The Welsh Language Impact Assessment is an in-depth document which provides sufficient information in relation to the proposal and forms part of the overall consultation documents. The robust public statutory consultation process ensures the Local Authority considers impacts on the Welsh language and seeks opinions on how to increase the positive impacts and mitigate negative impacts.</p>
<p>School Admissions Code Welsh Government</p> <p>Learner Travel Wales Measure 2008</p>		<p>Local catchment areas (regardless of language provision) and issues around travel distances</p>	<p>Wrexham does not have catchment areas in relation to school admissions. Pupils are admitted to mainstream schools based on parental preference. If the school becomes oversubscribed, the published over subscription criteria is applied to determine who gets the space regardless of the language designation of the provision. However, admission to a special school</p>

			<p>is a separate process determined by a specialist Additional Learning Needs Panel based on pupil need. This proposal relates to a special school therefore pupils would be placed on an individual need basis.</p> <p>Transport is provided in line with the Learner Travel Wales Measure 2008 to the nearest suitable school, including language or faith designation, subject to minimum distances (2-mile safe walking distance for primary, 3-mile safe walking distance for secondary).</p> <p>Pupils with complex additional learning needs who would be placed in the new special school will continue to be supported regarding transport arrangements and costs. Transportation for the pupils who attend this provision will be in accordance with the Council's policy for home-to-school transport. In line with the Council's school transport policy, free transport is provided to all pupils with additional learning needs who require transport. This proposal will not impact on that arrangement.</p>
<p>Technical Advice Note (TAN) 20 – Planning and the Welsh Language Welsh Government</p>	<p>Acknowledges that Welsh language is part of the social and cultural fabric of Wales. The future of the language across Wales will depend on a wide range of factors beyond the town and country planning system, particularly education, demographic change, community activities and a sound economic base to maintain thriving</p>	<p>The relevant local planning authority development plan in terms of Technical Advice Note (TAN 20) and due regard and consideration of Areas of Linguistic Sensitivity.</p>	<p>The Welsh Language Sensitive Areas for Wrexham are the communities of Ceiriog Uch, Coedpoeth, Glyntraian, Llansantffraid Glyn Ceiriog, Minera, Penycae and Rhosllanerchrugog. As a result, any windfall developments within these areas will be subject to a Welsh Language Impact Assessment by the Local Authority when a particular threshold is met:</p> <ul style="list-style-type: none"> <li>• All residential applications for 5 or more units in the Ceiriog Valley (Ceiriog</li> </ul>

	<p>sustainable communities. Advises on the role of the land use planning system in contributing to the future well-being of the Welsh language by establishing the conditions to allow sustainable communities to thrive. The TAN confirms that in determining planning applications and appeals, considerations relating to the use of the Welsh language may be considered so far as they are material. Section 70(2) of the Town and Country Planning Act 1990 (as amended) does not give any additional weight to the Welsh language above any other material consideration and decisions on all applications for planning permission must be based on planning grounds only and be reasonable.</p>		<p>Ucha, Glyntraian, Llansantffraid Glyn Ceiriog) and Minera.</p> <ul style="list-style-type: none"> <li>• All residential applications for 15 or more units elsewhere within the Welsh Language Sensitive Areas.</li> </ul> <p>Where the Welsh Language Impact Assessment demonstrates that the development may have an adverse impact on the language, proposals must be accompanied by a Welsh Language Action Plan setting out the measures to be taken to protect, promote and enhance the Welsh Language and culture.</p> <p>The implementation of any measures identified within the Welsh Language Action Plan shall be secured either by planning conditions or, where necessary, by planning obligations.</p> <p>The location of the proposed new special school, Gwersyllt, is not designated as a high-sensitivity or a high Welsh-speaking area according to the Census 2021 data and the ALS framework. However, learners who attend the new special school could come from any area within Wrexham and therefore, the local authority has an obligation to consider countywide linguistic effects, regardless of whether the site for the new special school is in a high-sensitivity area or not. The new provision aims to offer equality and parity of choice to parents and learners who want Welsh medium education within Wales, and within a reasonable distance from their home as residents of Wrexham. It will mean that learners who could be</p>
--	---	--	---

			attending out of county schools in England can remain in Wales for their education, where they will be able to access the Welsh curriculum and be fully immersed in Welsh language, Welsh culture and heritage, which will be made fully accessible.
Welsh Language Promotion Strategy Wrexham	A Welsh language strategy formulated by The Language Strategic Forum based on Anglesey, an independently chaired forum including members of various groups and organisations operating through the medium of Welsh. The language strategy identifies three priority areas which form the basis of the strategy, comprising: <ul style="list-style-type: none"> <li>i. Priority Area 2 - the workplace, Welsh language services, the infrastructure.</li> <li>i. Priority Area 2 - the community</li> </ul>	Links to the relevant LA 5-year Welsh Language Promotion Strategy	The authority is committed to raising the profile of the Welsh language and increasing participation in Welsh medium education in Wrexham. Our capital investment Programme in Welsh medium provision has been an ongoing focus over several years in Wrexham. It aligns with several objectives contained in the Council's WESP and in Wrexham's Welsh Language Promotion Strategy, including: <ul style="list-style-type: none"> <li>• Continuing to generate greater access and wider participation within Welsh medium at a primary level for Wrexham learners.</li> <li>• Increasing participation and retention in the Welsh medium primary sector.</li> <li>• Increasing the demographic spread of Welsh medium primary provision in Wrexham.</li> <li>• Ensuring ALN provision through the medium of Welsh is equivalent to the provision available through the medium of English.</li> <li>• Supporting the Welsh Government's vision and strategy of a million Welsh speakers by 2050.</li> </ul>
Cymraeg 2050: Welsh Language Strategy - A million Welsh speakers Welsh Government	The strategy was launched by the First Minister and the Minister for Lifelong Learning and Welsh Language on 10 July 2017 with a vision to reach a million Welsh speakers by 2050. The strategy identifies	Links to the aims of Cymraeg 2050	Wrexham Council's Welsh in Education Strategic Plan (2022-2031) (WESP) and Welsh Language Promotion Strategy (2022-2027) directly support the Welsh Government's vision and are the cornerstone of the Council's contribution towards meeting the target of one

	<p>that “the challenge of achieving a million Welsh speakers by 2050 calls for far-reaching changes”. Three strategic themes have been identified within the strategy to achieve its vision:</p> <ul style="list-style-type: none"> <li>i. increasing the number of Welsh speakers; increasing the use of Welsh.</li> <li>ii. creating favourable conditions – infrastructure and context.</li> </ul>		<p>million Welsh speakers by 2050, outlined in the Welsh Government’s Cymraeg 2050: Welsh language Strategy. The authority is committed to raising the profile of the Welsh language and increasing participation in Welsh medium education in Wrexham as evidenced by the success of previous Education projects and initiatives.</p>
<p>Well-being of Future Generations (Wales) Act 2015</p>	<p>Sets ambitious, long-term well-being goals to reflect the Wales that the people of Wales want to live in, now and in the future. The Act requires public bodies to think more about the long term, to work better with people, communities and each other, look to prevent problems and take a more joined-up approach – helping to create a Wales that we all want to live in, now and in the future. One of its goals is to create a Wales of vibrant culture and thriving Welsh language where society promotes and protects culture, heritage and the Welsh language. It marks an important milestone for the language, underlining its official status.</p>	<p>General links to the goals of the Well-being of Future Generations (Wales) Act 2015</p>	<p>Opportunities to develop education provision, both within the County and in partnership with our neighbouring authorities, will ensure a more prosperous Wrexham and a more prosperous Wales. Our proposals to meet the rising demand for Welsh medium and faith education will contribute towards the well-being goals ‘A Wales of cohesive communities,’ ‘A more equal Wales and ‘A Wales of vibrant culture and thriving Welsh language’ by building strong, interconnected communities that have access to education provision in the faith and the language of their choice.</p> <p>The Integrated Impact Assessment linked to this proposal (IIA794127862) presents information and assurance about how, when taking decisions, we have considered our duties and commitments in relation to several policies, strategies and legislation, including the Well-being of Future</p>

		<p>Generations (Wales) Act 2015. The Well-being of Future Generations Act places a duty on public bodies in Wales to carry out sustainable development. We have considered the ways of working in the following ways:</p> <p><b>Involvement:</b> The importance of involving people with an interest in achieving the wellbeing goals and ensuring that those people reflect the diversity of the area which the body serves. We involve an extensive number of key stakeholders including the communities served by the schools in accordance with the School Organisation Code 2026. We also adhere to the Council's Involvement Strategy and The Gunning Principles.</p> <p><b>Long Term:</b> The importance of balancing the short-term needs with the need to safeguard the long-term needs. The proposal will ensure increased access to specialist education for pupils in the Wrexham area with complex additional learning needs and better long-term life chances for pupils with complex additional learning needs.</p> <p><b>Prevention:</b> How to act to prevent problems occurring or getting worse, to help us meet the well-being objectives. The proposal aims to ensure sustainable and improved learning facilities to meet the needs of pupils with complex additional learning needs which will help to prevent problems occurring or getting worse.</p> <p><b>Integration:</b> Considering how our own well-being objectives may impact upon each of the</p>
--	--	---

			<p>well-being goals, on our other objectives, or on the objectives of other public bodies. The proposal will assist in supporting the Council's well-being objectives by integrating with other objectives in the WESP, Welsh Language Promotion Strategy and Cymraeg 2050 to build strong, interconnected Welsh communities, culture and heritage.</p> <p><b>Collaboration:</b> Acting in collaboration with any other person, partners or different parts of our own organisation to help us meet our well-being objectives. The proposal with support effective collaboration with partners and improved opportunities for multi-agency working, including access to health professionals for pupils with complex additional learning needs.</p>
Socio-economic considerations	<p>Key factors include:</p> <ul style="list-style-type: none"> <li>i. Income</li> <li>ii. Employment</li> <li>iii. Health</li> <li>iv. Education</li> <li>v. Housing</li> <li>vi. Access to Services</li> <li>vii. Community Safety</li> </ul>	<p>Comparison of the ward/Lower Super Output Area (LSOA) data on deprivation with the data on Welsh speakers</p>	<p>Based on the Welsh Index of Multiple Deprivation (WIMD) 2025 published in November 2025, Wrexham contains 85 LSOAs, which accounts for 4.4% of the 1,917 total LSOAs in Wales. Of the 0% - 10% most deprived LSOAs in Wales (the top 191 most deprived areas), 6 are within Wrexham. These 6 areas account for 7.1% of all LSOAs within the Wrexham Local Authority. This group of 6 areas accounts for 0.3% of the total LSOAs in Wales. The WIMD 2025 calculates deprivation across eight specific domains. For Gwersyllt, the patterns are as follows:</p> <p><b>Income:</b> This domain measures the proportion of people experiencing low income. While Gwersyllt does not contain any areas in the top 10% most deprived for</p>

		<p>income, Gwersyllt West shows higher concentrations of income-deprived residents compared to the ward's northern and eastern areas.</p> <p><b>Employment:</b> Measures the proportion of the working-age population who are involuntarily out of work. Employment deprivation is most notable in Gwersyllt West 1, while Gwersyllt North 2 typically sees lower levels of unemployment and related benefit claims.</p> <p><b>Health:</b> Focuses on premature death and chronic health conditions. Health outcomes in Gwersyllt are relatively stable, with most areas falling into the middle quintiles (Deciles 4 - 7).</p> <p><b>Education:</b> Includes school attainment and absenteeism. Education ranks are a relative strength for the northern part of the ward, where areas like Gwersyllt North often feature in the least deprived 30% of Wales.</p> <p><b>Housing:</b> This domain's weight increased for 2025 to better account for energy efficiency and affordability. Deprivation in this domain is generally low across the ward, as Wrexham had no areas in the most deprived 10% for housing in 2025.</p> <p><b>Access to Services:</b> Measures travel time to essential services. As a semi-urban area with good rail and road links to Wrexham city centre, Gwersyllt generally performs well in this domain, typically ranking in the least deprived half of Wales.</p> <p><b>Community Safety:</b> Measures recorded crime and anti-social behaviour. Wrexham saw significant</p>
--	--	--

			improvements in some community safety ranks in 2025, and Gwersyllt areas generally fall outside the highly deprived brackets.
Mitigating factors	Cross-boundary and regional issues.	Cross-boundary and regional issues.	<p>There is an increasing demand for specialist provision for learners with additional learning needs in other neighbouring authorities and across the region.</p> <p>The Local Authority also continues to work collaboratively with regional partners to share best practice and expand the overall quality, reach, and coherence of Welsh-medium ALN provision across the region.</p>