



Wrexham County Borough Council

## Consultation on the Dee Valley Federation of Schools

### Community Impact Assessment

April 2025

Garth CP Garth Road Garth Trevor LL20 7UY	Froncysyllte CP Woodland Road Llangollen LL20 7SU	Pentre Church in Wales Voluntary Controlled Primary School Pentre Village, Chirk, LL14 5AW
---	--	---

This document is available in languages other than Welsh or English upon request. It is also available in accessible formats such as large print, Braille, BSL DVD and audio-CD upon request. To make a request for this document in another format or language, please email [DeeValleyConsultation@wrexham.gov.uk](mailto:DeeValleyConsultation@wrexham.gov.uk) or write to Dee Valley Consultation, Education, Crown Buildings, 31 Chester Street, Wrexham, LL13 8BG.

This remains a working document and is subject to change throughout the consultation period.



## Introduction

Wrexham County Borough Council's School Organisation Framework (2017-2025) sets out the Council's vision and long-term strategic direction for developments in education provision.

Pending agreement from the Executive Board in September 2025, Wrexham County Borough Council is planning to carry out a formal consultation on the Dee Valley Federation of Schools. If approved, the consultation will run from **23<sup>rd</sup> September 2025 to 7<sup>th</sup> November 2025** to allow sufficient time for stakeholders to respond.

The Council has a duty to ensure that education provision reflects the changing patterns of population, and that our schools are based in the right location with accommodation and facilities fit to serve the needs of all learners. When considering how many school places are needed, consideration is given to the number of pupil places available, increasing and decreasing trends in admission numbers and the projected demand for pupil places in a school.

Where there is a high number of surplus school places, resources are being utilised in such a way that could be better used to improve the quality of education for all learners. A high number of surplus places makes planning and managing the school difficult, creating issues in managing infant class sizes and potentially leaving parts of the school unused which is not cost-effective.

The proposal to consult on the Dee Valley Federation of schools has not been taken lightly. The consultation will follow guidelines established by the Welsh Government and will involve key stakeholders as set out in the School Organisation Code 2018. The School Organisation Code (2018) requires Local Authorities to carry out a Community Impact Assessment to give due consideration to the effects of proposals on the community.

This document assesses the impact that the proposal may have on the community and forms part of a number of impact assessments including: the Welsh Language, Transport and an Integrated Impact Assessment which includes the Wellbeing of Future Generations and Equality. The Council has recently introduced an Integrated Impact Assessment which considers our duties and commitments in relation to:

- Our Council Priorities (2023-28)
- Our Climate and Ecological Emergency Declaration (2019)
- Our Involvement Strategy (2022-2027)
- Equality Act 2010 (including Public Sector Equality Duty, Socio-economic Duty and Procurement)
- Welsh Language Measure (Wales) 2011-Policy Making Standards
- Armed Forces Act 2021
- Well-being of Future Generations (Wales) Act 2015

Impact assessments are working documents which will be continuously updated in light of information from consultation with stakeholders and decisions taken by Elected Members.

## **The Proposal and Potential Impacts**

The proposal is to consider the following 3 options and potential impacts on the Dee Valley Federation of Schools:

- **Option 1** - Maintain the Status Quo. This option would mean all 3 schools in the Dee Valley Federation would continue to operate as they do now.
- **Option 2** - Close Froncysyllte Community Primary School. This option would mean that Froncysyllte CP would close and current pupils would be offered a place at an alternative school.
- **Option 3** - Close all 3 schools in the Dee Valley Federation to create a single, amalgamated school on one site. This option would include the immediate closure of Froncysyllte in advance of the wider restructure.

## **Preferred Option**

The preferred option is Option 2.

The level of surplus places at Froncysyllte CP is projected to continue. There is no data available to suggest that the number of pupils applying for a place at the school would exceed 84 in future years.

By bringing this proposal forward, the Council intends to address the decreasing demand for school places at Froncysyllte CP.

**Option 1** has been discounted due to:

- Decreasing numbers of pupils applying for places at the school over a sustained period.
- Forecasts which suggest this trend will continue.
- The decrease in pupil numbers has impacted on the school's educational and financial sustainability and this needs to be addressed.

**Option 3** has been discounted due to:

- An alternative suitable site is not available. Option 3 will therefore not be consulted on.

## **Why is the Council proposing the changes?**

Factors that have been considered by the Council in deciding to consult on this proposal include:

- To ensure future sustainability of schools in the Dee Valley Federation.

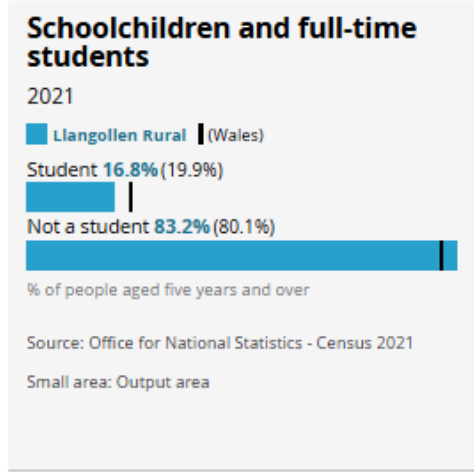
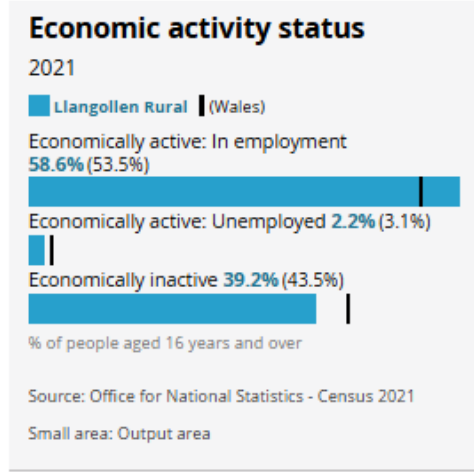
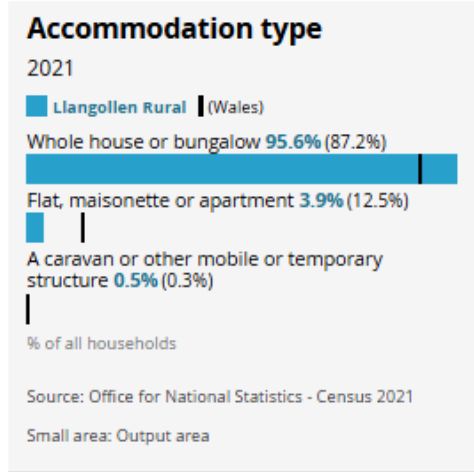
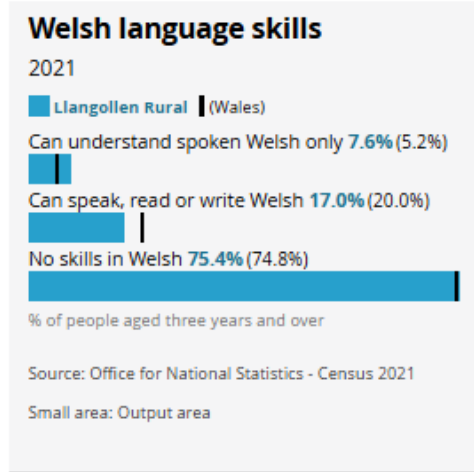
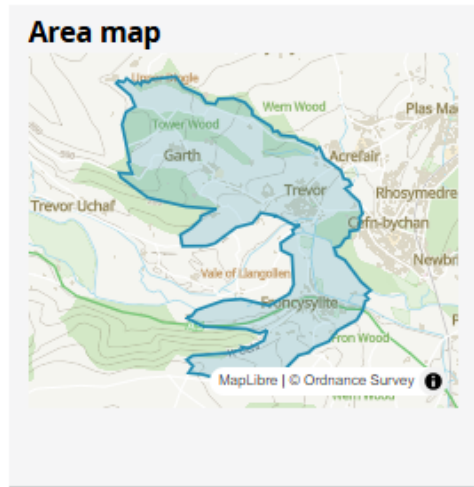
- To enable pupils to attend alternative schools which would be better equipped to meet the new Curriculum for Wales.
- To enable pupils to attend alternative schools which would provide a wider range of educational and extra-curricular opportunities.
- To enable pupils to attend a school with a larger cohort, so that pupils can be taught in classes of a similar age group providing additional opportunities for peer support.
- To enable pupils to attend schools with better quality accommodation.
- To ensure efficiency of resource planning and management.
- To reduce the Council's overall surplus capacity in primary schools.
- To address the issue of low pupil numbers on roll and projected intake.
- To ensure that the Council complies with its duty to monitor the demand for school places and ensure viability of the school estate.
- To realise a financial saving accrued to the Dee Valley Federation budget.

**The proposed changes would:**

- Reduce the Council's overall surplus capacity in Wrexham's primary schools.
- Provide an appropriate solution to meet local demand for school places in the areas where the schools are located.
- Limit the impact on all schools, both locally and across the county.
- Support the sustainable growth of Welsh-medium education in line with the aspirations of the Council's Welsh in Education Strategic Plan and Cymraeg 2050.
- Enable pupils to attend alternative schools which would be better equipped to meet the new Curriculum for Wales.
- Enable pupils to attend alternative schools which would provide a wider range of educational and extra-curricular opportunities
- Enable pupils to attend a school with a larger cohort, so that pupils can be taught in class of a similar age group.
- Enable pupils to access additional opportunities for peer support.
- Provide curriculum consistency, familiarity of leadership approaches and continuity of care for local pupils.
- Improve standards of education to the benefit of all pupils in the area.

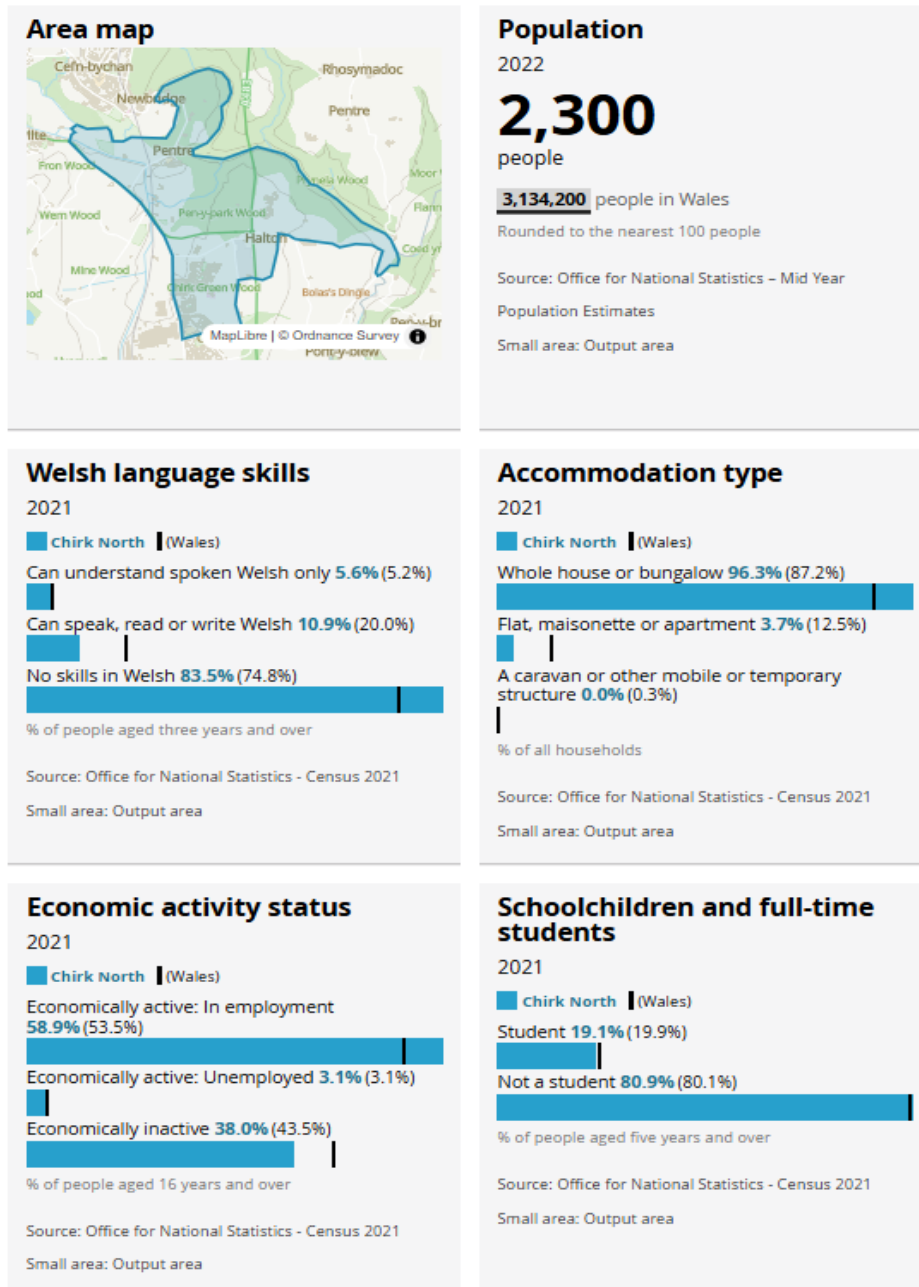
# Ward Profile-Llangollen Rural

## Llangollen Rural



Garth CP and Froncysyllte CP are within the Llangollen Rural Ward. The picture shows the area map and information on population, Welsh language skills, accommodation type, economic activity and the percentage of school children and full time students. For further information on the Llangollen Rural Census Data, please visit [Custom Area Profile-Llangollen Rural Ward](#) on the Office for National Statistics website.

## Chirk North



Pentre CIW VC Primary School is within the Chirk North Ward. The picture shows the area map and information on population, Welsh language skills, accommodation type, economic activity and the percentage of school children and full time students. For further information on the Chirk North Census Data, please visit [Custom Area Profile-Chirk North](#) the Office for National Statistics website.

## **The Community**

Facilities and services which Garth CP accommodates (this information has been taken from the school's website, the school's prospectus or provided by the Headteacher):

- Toddler Groups for the Local Community
- Breakfast Club
- After School Club
- Dee Valley Childcare-located on the Garth site for children aged 2-5

Facilities and services which Froncysyllte CP accommodates (this information has been taken from the school's website, the school's prospectus or provided by the Headteacher):

- Toddler Groups for the Local Community
- Breakfast Club

Facilities and services which Pentre Church in Wales Voluntary Controlled Primary School accommodates (this information has been taken from the school's website, the school's prospectus or provided by the Headteacher):

- Toddler Groups for the Local Community
- Breakfast Club
- After School Club

The list below shows the types of community services available / provided in the area of the three schools:

- Church/Church Memorial
- Clinic/Pharmacy
- Public Houses
- Public Transport
- Day Nursery
- Caravan Park
- Cafe
- Community Council
- Car Parking
- Community Centre Accommodating Local Groups
- Male Voice Choir
- Park/Playground
- Local Landmarks-Pontcysyllte Aqueduct, Chirk Castle
- Defibrillators

The area serving the schools was not previously designated as a Communities First area.

The Local authority has considered whether it would be feasible and economical to co-locate local services in Froncysyllte CP to offset the costs of maintaining the school, however this is not viable due to the size and appropriateness of the school site.

### **Childcare Facilities in the Local Area**

The table below shows the childcare services which serve Garth CP (within 3 walking miles of the school site):

<b>Name</b>	<b>Type</b>	<b>Distance (Miles)</b>
Dee Valley Federation	Full Day Care	0
Jo Feldman	Childminder	0.3
Emma Jones	Childminder	0.91
Kiddies World	Playgroup	1.24
Diddy Dragons	After School Club, Holiday Club, Breakfast Club	1.24
Cefn Mawr Bright Starts	Playgroup	1.53
Min Y Ddol Cylch Meithrin/Plws	Playgroup	2.1
Penycae Childcare	After School Club	2.24
Emma's Childminding Emma Prydden	Childminder	2.41
Little Wrens	Childminder	2.46
Little Sunflowers	Full Day Care	2.7
Idwal Family Centre	Flying Start	2.8

The table below shows the childcare services which serve Froncysyllte CP (within 3 walking miles of the school site):

<b>Name</b>	<b>Type</b>	<b>Distance (Miles)</b>
Cefn Mawr Bright Starts	Playgroup	0.76
Min Y Ddol Cylch Meithrin/Plws	Playgroup	0.76
Emma Jones	Childminder	1.06
Kiddies World	Playgroup	1.23
Diddy Dragons	After School Club, Holiday Club, Breakfast Club	1.23
Penycae Childcare	After School Club	2.58
Mini World	Day Nursery	2.73
Emma's Childminding Emma Prydden	Childminder	2.84
Little Wrens	Childminder	2.85
Rogues and Rascals	Childminder	2.91
Rainbows	After School Club	2.8
Manford Little Lambs	Day Nursery	3

The table below shows the childcare services which serve Pentre Church in Wales Voluntary Controlled Primary School (within 3 walking miles of the school site):

<b>Name</b>	<b>Type</b>	<b>Distance (Miles)</b>
Cefn Mawr Bright Starts	Playgroup	0.87
Min Y Ddol Cylch Meithrin/Plws	Playgroup	0.87
Kiddies World	Playgroup	1.54
Diddy Dragons	After School Club, Holiday Club, Breakfast Club	1.54
Emma Jones	Childminder	1.63
Mini World	Day Nursery	2.16
Rogues and Rascals	Childminder	2.39
Penycae Childcare	After School Club	2.6
Little Angels	Childminder	2.65
Little Wrens	Childminder	2.85
Emma's Childminding Emma Prydden	Childminder	2.88
Rainbows	After School Club	2.1
Manford Little Lambs	Day Nursery	2.3

### **Information on wider community safety issues**

It is not anticipated that the proposal will have an adverse effect on wider community safety issues.

## Assessment of Potential Impacts on the Community

The impact of the proposed options has been considered, as shown in the tables below. If an impact is anticipated to be beneficial to the community, it has been identified as positive. If an impact is anticipated to be potentially detrimental to the community, it has been identified as negative and if an impact does not significantly affect the community it has been identified as neutral.

### Option 1-Maintain Status Quo

Description	Potential Impact	Comment
Access to provision of the same Faith Designation	Neutral	No Impact as No change
Access to Provision of the Same Language Medium	Neutral	No Impact as No change
Impact on the Community	Neutral	No Impact as No change
Impact on Community Demographics and Community Safety	Neutral	No Impact as No change
Impact on the Use of Welsh Within the Community	Neutral	No Impact as No change
Impact on Local Businesses	Neutral	No Impact as No change
Impact on Neighbouring Schools	Neutral	No Impact as No change
Impact on Pupils	Neutral	No Impact as No change
Impact on Parents/Carers and Families	Neutral	No Impact as No change
Impact on Learner Travel Arrangements	Neutral	No Impact as No change
Impact on facilities/other services provided at the school	Neutral	No Impact as No change
Impact on Educational Provision/Educational Standards	Neutral	No Impact as No change

Impact on Staff	Neutral	No Impact as No change
Impact on Governors	Neutral	No Impact as No change

## Option 2-Close Froncysyllte CP

Description	Potential Impact	Comment
Access to provision of the same Faith Designation	Neutral	No change.
Access to Provision of the Same Language Medium	Neutral	No change to the language medium in the Federation.
Impact on the Community	Negative Neutral	Local families may be unable to send their children to their local school. However, data illustrates that children currently attending Froncysyllte CP are travelling in from outside of the area. There could be a Negative impact for community groups currently using the school site. This can be mitigated as provisions are available in the remaining schools in the Federation and also within the community.
Impact on Community Demographics and Community Safety	Neutral	Unlikely to be any change in community demographics or community safety.
Impact on the Use of Welsh Within the Community	Neutral	Unlikely to affect the current use of Welsh within the community.
Impact on Local Businesses	Neutral	No anticipated impact.
Impact on Neighbouring Schools	Neutral	There are sufficient spaces in schools in the local area.
Impact on Pupils	Negative Positive	Transition arrangements need to be carefully managed. Provision of the most appropriate learning environment for all pupils in support of continuing school improvement.

Impact on Parents/Carers and Families	Negative Neutral	Local families may be unable to send their children to their local school. However, data illustrates that children currently attending Froncysyllte CP are travelling in from outside of the area. There could be a negative impact on parent's/carers and families who utilise the toddler group or breakfast on site. This is mitigated by similar provisions provided at other schools within the Federation.
Impact on Learner Travel Arrangements	Negative Positive	Some pupils may have to travel further to school, while some pupils may not need to travel as far.
Impact on facilities / other services provided at the school	Neutral	Toddler Groups and the Breakfast Club are offered at Garth CP and Pentre CIW VC.
Impact on Educational Provision/Educational Standards	Positive	More efficient use of resources, planning and staffing. Continued ability to provide sufficient pupil places for local children. Provision of the most appropriate learning environment for all pupils in support of continuing school improvement.
Impact on Staff	Negative	Potential impact on staffing structures. Any changes to staffing would need to be carefully managed with support provided from unions and advice/guidance from HR.
Impact on Governors	Neutral	There will be no changes to the Governing Body.

**Option 3-Close all 3 schools in the Dee Valley Federation to create a single, amalgamated school on one site. This option would include the immediate closure of Froncysyllte in advance of the wider restructure.**

Description	Potential Impact	Comment
Access to provision of the same Faith Designation	Neutral	No change
Access to Provision of the Same Language Medium	Positive	<p>No change to the language medium in the Federation. Access is maintained or enhanced at Welsh-medium schools as the preferred option is to close an English-medium school.</p> <p>There are sufficient pupil places available in English and Welsh medium schools within a 2 mile radius of Froncysyllte CP.</p>
Impact on the Community	Negative Neutral	Local families may be unable to send their children to their local school. However, data illustrates that children currently attending Froncysyllte CP are travelling in from outside of the area.
Impact on Community Demographics and Community Safety	Neutral	Unlikely to be any change in community demographics or community safety.
Impact on the Use of Welsh Within the Community	Neutral Positive	<p>Unlikely to affect the current use of Welsh within the community. Potential increase in applications to Welsh medium schools.</p> <p>Supports the Council's and WG targets Cymraeg 2050 and in the WESP.</p>
Impact on Local Businesses	Neutral	No anticipated impact.
Impact on Neighbouring Schools	Positive	<p>There are sufficient spaces in schools in the local area.</p> <p>There could be a positive impact on the Federation and the proposal could strengthen the Federation community.</p>

Impact on Pupils	Negative Positive	Transition arrangements need to be carefully managed. Provision of the most appropriate learning environment for all pupils in support of continuing school improvement.
Impact on Parents/Carers and Families	Negative Neutral	Local families may be unable to send their children to their local school. However, data illustrates that children currently attending Froncysyllte CP are travelling in from outside of the area.
Impact on Learner Travel Arrangements	Negative Positive	Some pupils may have to travel further to school, while some pupils may not need to travel as far.
Impact on facilities/other services provided at the school	Neutral	Toddler Groups and the Breakfast Club are offered at Garth CP and Pentre CIW VC.
Impact on Educational Provision/Educational Standards	Positive	More efficient use of resources, planning and staffing. Continued ability to provide sufficient pupil places for local children. Provision of the most appropriate learning environment for all pupils in support of continuing school improvement.
Impact on Staff	Negative	Potential impact on staffing structures. Any changes to staffing would need to be carefully managed with support provided from unions and advice/guidance from HR.
Impact on Governors	Neutral	There will be no changes to the Governing Body.

## Conclusions and Recommendations

The assessment illustrates that the option to maintain the status quo and continue with the current situation (option 1) would have no impact on the community. Should option 2 be realised, it is anticipated that there would be some effect on the community. This could be both positive and negative. As such, this option requires careful evaluation and management to ensure that pupils and parents can continue to access facilities and activities. Option 3 has been discounted due to no alternative suitable site being available. Option 3 will therefore not be consulted on.

## **Appendix 1-Sources of Information**

- Welsh Government's School Organisation Code (2018)
- Wrexham County Borough Council's School Organisation Framework (2017-2025)
- Welsh Language Standards (2016)
- Wrexham County Borough Council's Council Plan (2020-2023)
- Wrexham County Borough Council's Welsh in Education Strategic Plan 2022-2031 (WESP)
- 2021 Census Information
- Management Information Systems (MIS) statistical data
- Information provided by the Headteacher of Garth CP, Froncysyllte CP and Pentre Church in Wales Voluntary Controlled Primary School
- Information from the school prospectuses and websites
- Information from other websites (e.g. Community Council)
- Information provided by the Council's Childcare Team