



Wrexham County Borough Council

Consultation on the Dee Valley Federation of Schools

Transport Impact Assessment

June 2025

Garth CP Garth Road Garth Trevor LL20 7UY	Froncysyllte CP Woodland Road Llangollen LL20 7SU	Pentre Church in Wales Voluntary Controlled Primary School Pentre Village, Chirk, LL14 5AW
---	--	---

This document is available in languages other than Welsh or English upon request. It is also available in accessible formats such as large print, Braille, BSL DVD and audio-CD upon request. To make a request for this document in another format or language, please email DeeValleyConsultation@wrexham.gov.uk or write to Dee Valley Consultation, Education, Crown Buildings, 31 Chester Street, Wrexham, LL13 8BG.

This remains a working document and is subject to change throughout the consultation period.



Introduction

Wrexham County Borough Council's School Organisation Framework (2017-2025) sets out the Council's vision and long-term strategic direction for developments in education provision.

Pending agreement from the Executive Board in September 2025, Wrexham County Borough Council is planning to carry out a formal consultation on the Dee Valley Federation of Schools. If approved, the consultation will run from **23rd September 2025 to 7th November 2025** to allow sufficient time for stakeholders to respond.

The Council has a duty to ensure that education provision reflects the changing patterns of population, and that our schools are based in the right location with accommodation and facilities fit to serve the needs of all learners. When considering how many school places are needed, consideration is given to the number of pupil places available, increasing and decreasing trends in admission numbers and the projected demand for pupil places in a school.

Where there is a high number of surplus school places, resources are being utilised in such a way that could be better used to improve the quality of education for all learners. This makes planning and managing the school difficult, creating issues in managing infant class sizes and potentially leaving parts of the school unused which is not cost-effective.

The proposal to consult on the Dee Valley Federation of Schools has not been taken lightly. The consultation will follow guidelines established by the Welsh Government and will involve key stakeholders as set out in the School Organisation Code 2018. The School Organisation Code (2018) requires Local Authorities to carry out a Transport Impact Assessment to give due consideration to the effects of proposals on the likely impact on different travelling arrangements.

This document assesses the impact that the proposal may have on travel arrangements and forms part of a number of impact assessments including: the Welsh Language, Community and an Integrated Impact Assessment which includes the Wellbeing of Future Generations and Equality. The Council has recently introduced an Integrated Impact Assessment which considers our duties and commitments in relation to:

- Our Council Priorities (2023-28)
- Our Climate and Ecological Emergency Declaration (2019)
- Our Involvement Strategy (2022 – 2027)
- Equality Act 2010 (including Public Sector Equality Duty, Socio-economic Duty and Procurement)
- Welsh Language Measure (Wales) 2011 - Policy Making Standards
- Armed Forces Act 2021
- Well-being of Future Generations (Wales) Act 2015

Impact assessments are working documents which will be continuously updated in light of information from consultation with stakeholders and decisions taken by Elected Members.

The Proposal and Potential Impacts

The proposal is to consider the following 3 options and potential impacts on the Dee Valley Federation of Schools:

- **Option 1**-Maintain the Status Quo. This option would mean all 3 schools in the Dee Valley Federation would continue to operate as they do now.
- **Option 2**-Close Froncysyllte Community Primary School. This option would mean that Froncysyllte CP would close and current pupils would be offered a place at an alternative school.
- **Option 3**-Close all 3 schools in the Dee Valley Federation to create a single, amalgamated school on one site. This option would include the immediate closure of Froncysyllte CP in advance of the wider restructure.

Preferred Option

The preferred option is Option 2.

The level of surplus places at Froncysyllte CP is projected to continue. There is no data available to suggest that the number of pupils applying for a place at the school would exceed 84 in future years.

By bringing this proposal forward, the Council intends to address the decreasing demand for school places at Froncysyllte CP.

Option 1 has been discounted due to:

- Decreasing numbers of pupils applying for places at the school over a sustained period.
- Forecasts which suggest this trend will continue.
- The decrease in pupil numbers has impacted on the school's educational and financial sustainability and this needs to be addressed.

Option 3 has been discounted due to:

- An alternative suitable site is not available. Option 3 will therefore not be consulted on.

Why is the Council proposing the changes?

Factors that have been considered by the Council in deciding to consult on this proposal include:

- To ensure future sustainability of schools in the Dee Valley Federation.
- To enable pupils to attend alternative schools which would be better equipped to meet the new Curriculum for Wales.
- To enable pupils to attend alternative schools which would provide a wider range of educational and extra-curricular opportunities.
- To enable pupils to attend a school with a larger cohort, so that pupils can be taught in classes of a similar age group providing additional opportunities for peer support.
- To enable pupils to attend schools with better quality accommodation.
- To ensure efficiency of resource planning and management.

- To reduce the Council's overall surplus capacity in primary schools.
- To address the issue of low pupil numbers on roll and projected intake.
- To ensure that the Council complies with its duty to monitor the demand for school places and ensure viability of the school estate.
- To realise a financial saving accrued to the Dee Valley Federation budget.

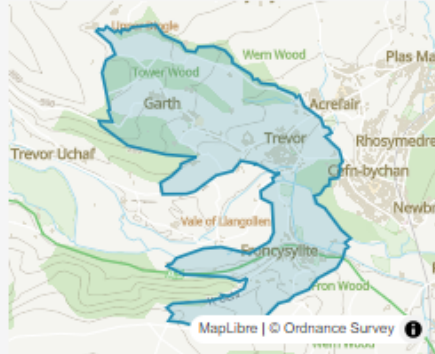
The proposed changes would:

- Reduce the Council's overall surplus capacity in Wrexham's primary schools.
- Provide an appropriate solution to meet local demand for school places in the areas where the schools are located.
- Limit the impact on all schools, both locally and across the county.
- Support the sustainable growth of Welsh-medium education in line with the aspirations of the Council's Welsh in Education Strategic Plan and Cymraeg 2050.
- Enable pupils to attend alternative schools which would be better equipped to meet the new Curriculum for Wales.
- Enable pupils to attend alternative schools which would provide a wider range of educational and extra-curricular opportunities
- Enable pupils to attend a school with a larger cohort, so that pupils can be taught in class of a similar age group.
- Enable pupils to access additional opportunities for peer support.
- Provide curriculum consistency, familiarity of leadership approaches and continuity of care for local pupils.
- Improve standards of education to the benefit of all pupils in the area.

Ward Profile-Llangollen Rural

Llangollen Rural

Area map



Population

2022

2,000
people

3,132,700 people in Wales

Rounded to the nearest 100 people

Source: Office for National Statistics – Mid Year

Population Estimates

Small area: Output area

Welsh language skills

2021

Llangollen Rural (Wales)

Can understand spoken Welsh only **7.6%** (5.2%)



Can speak, read or write Welsh **17.0%** (20.0%)



No skills in Welsh **75.4%** (74.8%)



% of people aged three years and over

Source: Office for National Statistics - Census 2021

Small area: Output area

Accommodation type

2021

Llangollen Rural (Wales)

Whole house or bungalow **95.6%** (87.2%)



Flat, maisonette or apartment **3.9%** (12.5%)



A caravan or other mobile or temporary structure **0.5%** (0.3%)



% of all households

Source: Office for National Statistics - Census 2021

Small area: Output area

Economic activity status

2021

Llangollen Rural (Wales)

Economically active: In employment **58.6%** (53.5%)



Economically active: Unemployed **2.2%** (3.1%)



Economically inactive **39.2%** (43.5%)



% of people aged 16 years and over

Source: Office for National Statistics - Census 2021

Small area: Output area

Schoolchildren and full-time students

2021

Llangollen Rural (Wales)

Student **16.8%** (19.9%)



Not a student **83.2%** (80.1%)



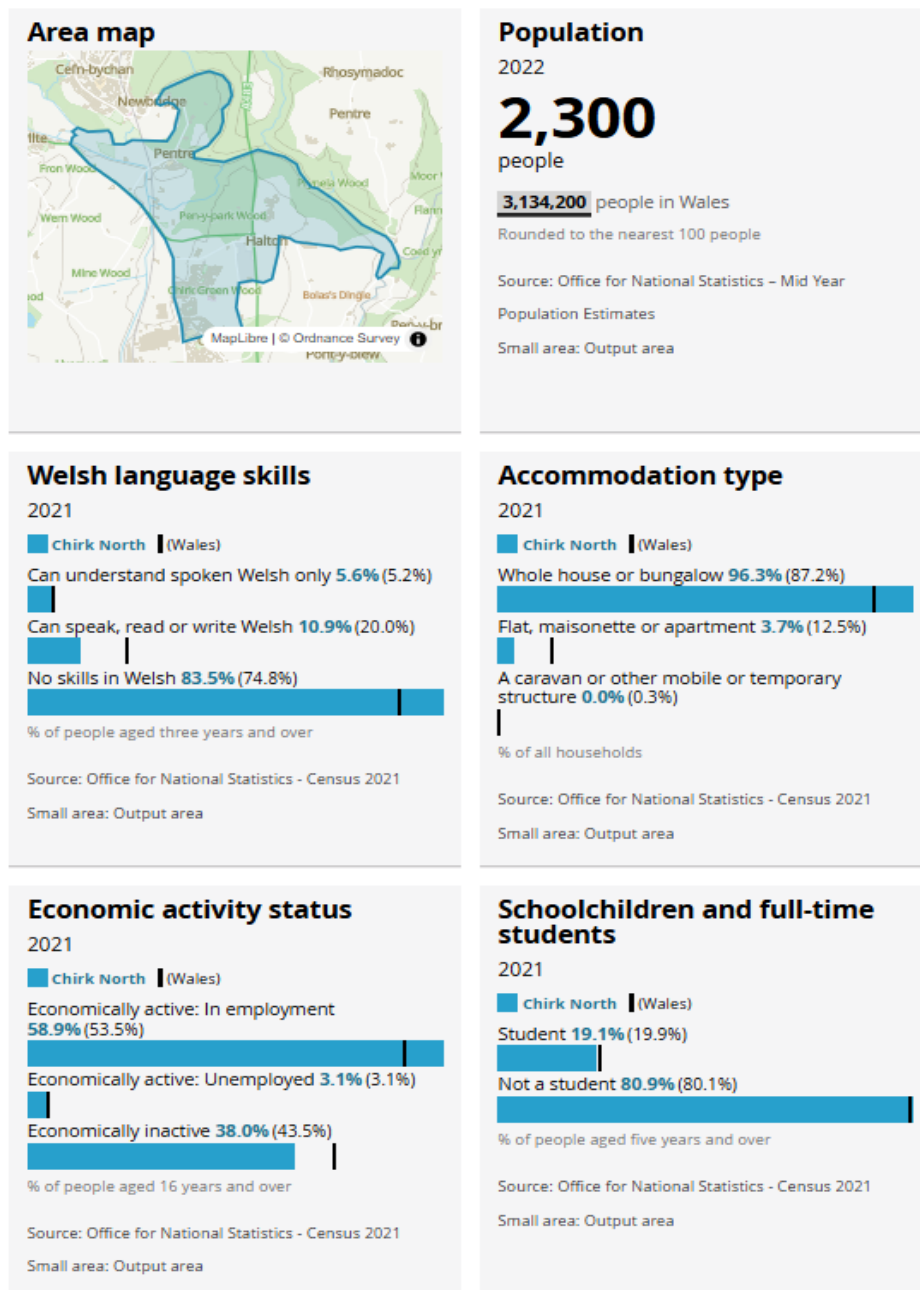
% of people aged five years and over

Source: Office for National Statistics - Census 2021

Small area: Output area

Garth CP and Froncysyllte CP are within the Llangollen Rural Ward. The picture shows the area map and information on population, Welsh language skills, accommodation type, economic activity and the percentage of school children and full time students. For further information on the Llangollen Rural Census Data, please visit [Custom Area Profile-Llangollen Rural Ward](#) on the Office for National Statistics website.

Chirk North



Pentre CIW VC Primary School is within the Chirk North Ward. The picture shows the area map and information on population, Welsh language skills, accommodation type, economic activity and the percentage of school children and full time students. For further information on the Chirk North Census Data, please visit [Custom Area Profile-Chirk North](#) the Office for National Statistics website.

Wrexham County Borough Council Transport Policy

Home to school transport arrangements are dealt with in Wrexham Council's Transport Policy. The definition of criteria is outlined below.

A suitable school is deemed to be:

- The Local Authority maintained school closest to the pupil's home by the nearest available route which provides education for the relevant age, ability and aptitude of a pupil, and for any additional learning needs that he/she may have.
- The nearest Welsh medium school (whether natural or designated).
- The nearest Voluntary Aided School.

The Local Authority is not responsible for the cost of transport:

- Where parental preference results in a pupil being allocated a place in a school which is not their nearest; in accordance with GIS Mapping.
- To schools maintained by other authorities where admission to those schools is a result of parental preference, unless that school is the nearest suitable school.
- For pupils who reside outside of the borough but who receive their education in a school in Wrexham. Application should be made to the LA in which a pupil resides, if appropriate.

Age Criteria:

- The Local Authority is required to provide free transport for eligible pupils of compulsory school age.
- The Local Authority does not provide transport for pupils attending nursery school or nursery classes at the age of three. Transport is provided from the commencement of the school year in which the child turns five.
- The Local Authority does not provide transport for sixth-form schools and colleges for post-16 students. Any post-16 students requiring transport are required to contact their sixth form establishment for information regarding any transport arrangements that may be available.

The Council's School Transport Policy is available to view at the following link:

[School Transport | Wrexham County Borough Council](#)

The Learner Travel (Wales) Measure 2008

The Learner Travel (Wales) Measure 2008 states that transport arrangements are unsuitable '*if they take an unreasonable amount of time*' (Sections 3 and 4). However, the measure does not state a time limit for journeys.

The Welsh Government's School Organisation Code (2018) advises that due regard should be given to '*The nature of journeys to alternative provision and resulting journey time for pupils, including pupils with additional learning needs, in particular whether primary school pupils will have one-way journeys in excess of 45 minutes or secondary school pupils one way journeys of over an hour*' (pg. 7).

In addition, the School Organisation Code states that '*Arrangements for accessing the alternative provision should encourage sustainable transport; and they should*

address the possible effect of any transport difficulties on pupils' engagement with, and attendance at, school. Likely walking or cycling routes for safety and accessibility should be assessed prior to bringing forward proposals.' (pg. 8).

School Profiles

Froncysyllte CP is currently registered as an English-medium community primary school. It is located on Woodlands Road, Froncysyllte in the Llangollen Rural ward. The school has a Published Admission Number (PAN) of 12 pupils, with an age range of 3-11 years.

Name of the School	Froncysyllte CP
Location of the School	Woodland Road, Froncysyllte, LL20 7SU
Age Range	3-11
School Category	Community Primary
Language Medium	English Medium
Current Capacity	84
Surplus Places (January 2025)	73
Building Condition Category	B

Garth CP is currently registered as an English-medium community primary school. It is located on Garth Road, Garth, Trevor, LL20 7UY in the Llangollen Rural ward. The school has a Published Admission Number (PAN) of 15 pupils, with an age range of 3-11 years.

Name of the School	Garth CP
Location of the School	Garth Road, Garth, Trevor, LL20 7UY
Age Range	3-11
School Category	Community Primary
Language Medium	English Medium
Current Capacity	105
Surplus Places (January 2025)	60
Building Condition Category	B

Pentre CIW VC Primary School is currently registered as an English-medium voluntary controlled primary school. It is located in Pentre Village, Chirk, LL14 5AW in the Chirk North ward. The school has a Published Admission Number (PAN) of 10 pupils, with an age range of 3-11 years.

Name of School	Pentre CIW VC Primary School
Location of the School	Pentre Village, Chirk, LL14 5AW
Age Range	3-11
School Category	Voluntary Controlled
Language Medium	English Medium
Current Capacity	70
Surplus Places (January 2025)	28
Building Condition Category	B

Pupil Numbers

The table below shows the number of pupils on roll at each of the schools in the Dee Valley Federation over the past 5 years.

Total Number of Pupils on Roll-Froncysyllte CP (PLASC)

Year	Total F/T	Surplus Places	Percentage
2020/21	26	58	69.05%
2021/22	21	63	75.00%
2022/23	24	60	71.43%
2023/24	19	65	77.38%
2024/25	11	73	86.90%

**Please note the above pupil data does not take into account pupils in Resourced Provision or nursery pupils. Source-PLASC. Nursery pupil numbers and numbers of pupils in Resourced Provision should not be included.*

Pupil Projections-Froncysyllte CP

Year	Total F/T	Surplus Places	Percentage
2025/26	6	78	92.86%
2026/27	5	79	94.05%
2027/28	1	83	98.81%
2028/29	1	83	98.81%
2029/30	0	84	100.00%

**Please note the above pupil data does not take into account pupils in Resourced Provision or nursery pupils. Source-PLASC. Nursery pupil numbers and numbers of pupils in Resourced Provision should not be included.*

Total Number of Pupils on Roll-Garth CP (PLASC Data)

Year	Total F/T	Surplus Places	Percentage
2020/21	46	59	56.19%
2021/22	55	50	47.62%
2022/23	51	54	51.43%
2023/24	43	62	59.05%
2024/25	45	60	57.14%

**Please note the above pupil data does not take into account pupils in Resourced Provision or nursery pupils. Source-PLASC. Nursery pupil numbers and numbers of pupils in Resourced Provision should not be included.*

Pupil Projections-Garth CP

Year	Total F/T	Surplus Places	Percentage
2025/26	49	56	53.33%
2026/27	51	54	51.43%
2027/28	46	59	56.19%
2028/29	45	60	57.14%
2029/30	42	63	60.00%

**Please note the above pupil data does not take into account pupils in Resourced Provision or nursery pupils. Source-PLASC. Nursery pupil numbers and numbers of pupils in Resourced Provision should not be included.*

Total Number of Pupils on Roll-Pentre CIW VC Primary School (PLASC Data)

Year	Total F/T	Surplus Places	Percentage
2020/21	54	16	22.86%
2021/22	61	9	12.86%
2022/23	51	19	27.14%
2023/24	44	26	37.14%
2024/25	42	28	40.00%

**Please note the above pupil data does not take into account pupils in Resourced Provision or nursery pupils. Source-PLASC. Nursery pupil numbers and numbers of pupils in Resourced Provision should not be included.*

Pupil Projections-Pentre CIW VC Primary School

Year	Total F/T	Surplus Places	Percentage
2025/26	39	31	44.29%
2026/27	33	37	52.86%
2027/28	26	44	62.86%
2028/29	26	44	62.86%
2029/30	26	44	62.86%

**Please note the above pupil data does not take into account pupils in Resourced Provision or nursery pupils. Source-PLASC. Nursery pupil numbers and numbers of pupils in Resourced Provision should not be included.*

Assessment of Potential Impacts on Transport Arrangements

The impact of the proposed options have been considered, as shown in the tables below. If an impact is anticipated to be beneficial to transport arrangements, it has been identified as positive. If an impact is anticipated to be potentially detrimental to transport arrangements, it has been identified as negative and if an impact does not significantly affect transport arrangements, it has been identified as neutral.

Option 1-Maintain Status Quo

Description of Impact	Anticipated Impact (Positive/Negative/Neutral)	Comments and Mitigations
Impact on Road Network and Traffic Flow/Congestion	Neutral	No change and therefore no impact.
Impact on Parking	Neutral	No change and therefore no impact.
Impact on Public and Active Travel	Neutral	No change and therefore no impact.
Impact on Road Safety	Neutral	No change and therefore no impact.
Impact on Transportation Costs	Neutral	No change and therefore no impact.
Impact on Journey Times for Pupils and Families	Neutral	No change and therefore no impact.
Impact on Journey Times for Staff	Neutral	No change and therefore no impact.
Impact on Carbon Consumption/Footprint	Neutral	No change and therefore, no impact.

Option 2-Close Froncysyllte CP

Description of Impact	Anticipated Impact (Positive/Negative/Neutral)	Comments and Mitigations
Impact on Road Network and Traffic Flow/Congestion	Positive	Reduction in volume of traffic in the Froncysyllte community which would potentially mean less congestion in the village.
	Negative (Minimal)	Increase in volume of traffic/congestion at school pick up and drop off times at the schools that pupils from Froncysyllte CP transfer to. However, the increase in the volume of traffic would be minimal as only a low number of pupils currently attend Froncysyllte CP.
Impact on Parking	Positive	Reduction in parking pressures in the Froncysyllte community at pick up and drop off times.
	Negative (Minimal)	Increase in parking pressures at school pick up and drop off times at the schools that pupils from Froncysyllte CP transfer to. However, the increase parking pressures would be minimal as only a low number of pupils currently attend Froncysyllte CP.
Impact on Public and Active Travel	Negative	Closure of Froncysyllte CP could mean longer walking/cycling distances for pupils and therefore, reduced active travel to school. Public travel may also be affected.
	Neutral (Minimal)	However, data shows that pupils attending Froncysyllte CP travel to school from outside of the immediate area. Therefore, active travel is not adversely affected.

Impact on Road Safety	Negative (Minimal)	<p>Potential for increased crossing demand at schools that pupils from Froncysyllte CP transfer to.</p> <p>This could be mitigated by monitoring crossing demand at the schools that Froncysyllte CP pupils transfer to and increasing crossing patrols in that area if necessary.</p>
Impact on Transportation Costs to the Local Authority	Neutral	As there are a number of alternative schools within 2 miles that pupils from Froncysyllte CP can transfer to, there will be a minimal impact on transport costs.
Impact on Journey Times for Pupils and Families	Positive	As pupils currently attending Froncysyllte CP are travelling in from outside of the immediate area, transferring to an alternative school may be closer to their home address; having a positive effect on their journey time to school.
Impact on Journey Times for Staff	Negative	Staff may be relocated to alternative schools which could have a negative effect on their journey times (e.g. work in school further away from their home address ect.)

Option 3-Close all 3 schools in the Dee Valley Federation to create a single, amalgamated school on one site. This option would include the immediate closure of Froncysyllte in advance of the wider restructure.

Description of Impact	Anticipated Impact (Positive/Negative/Neutral)	Comments and Mitigations
Impact on Road Network and Traffic Flow/Congestion	Positive	Reduction in volume of traffic in the Froncysyllte, Garth and Pentre communities which would potentially mean less congestion in the villages.
	Negative	Significant increase in congestion/the volume of traffic at a new larger school site at pick up and drop off times.
Impact on Parking	Positive	Reduction in parking pressures in the Froncysyllte, Garth and Pentre communities at pick up and drop off times.
	Negative	Significant increase in parking pressures at a new larger school site at pick up and drop off times.
Impact on Public and Active Travel	Negative	The closure of all 3 schools within the Federation could mean longer walking/cycling distances for pupils to a new school site (dependent on home address). Therefore, resulting in reduced active travel to school. Public travel may also be affected.
Impact on Road Safety	Negative	Increased crossing demand at a new school site accommodating pupils from the 3 schools within the Dee Valley Federation.

Impact on Transportation Costs	Negative	Depending on where a new school site was situated, the LA may need to provide transport to pupils who live further than 2 miles from a new school site. This would have a negative impact on transportation costs.
Impact on Journey Times for Pupils and Families	Negative	Depending on where a new school site was situated, pupils may need to travel further to school This would have a negative impact on pupils and their families.
Impact on Journey Times for Staff	Negative	Staff may be relocated to alternative schools which could have a negative effect on their journey times to school (e.g. school further away from their home address ect.)

Conclusions and Recommendations

Outcomes of the Transport Impact Assessment indicate that the proposal is feasible and there are unlikely to be any significant adverse effects identified in the initial assessment. Free transport is provided to all pupils with additional learning needs who require transport. This proposal will not impact on this arrangement.

Transportation for the pupils who currently attend Froncysyllte CP will not change and will remain in accordance with the Council's policy for home-to-school transport. It is recognised that the proposal may mean some children have to travel further and for longer if they do not live in the local area. However, the identified wider benefits for learners outweigh this (e.g. enabling pupils to attend alternative schools which would be better equipped to meet the new Curriculum for Wales and enabling pupils to attend a school with a larger cohort, so that they can be taught in class of a similar age group).

The information presented illustrates that the option to maintain the status quo and continue with the current situation (Option 1) would have no impact on transport arrangements. Should Option 2 be realised, it is anticipated that there would be some effect on travel arrangements. This could be both positive and negative. As such, this option requires careful evaluation and management to ensure that pupils and parents can continue to access facilities and activities. Option 3 has been discounted due to a number of negative impacts on travel arrangements as highlighted above and no alternative suitable site being available. Option 3 will therefore not be consulted on.

Appendix 1-Sources of Information

- Welsh Government's School Organisation Code (2018)
- Wrexham County Borough Council's School Organisation Framework (2017-2025)
- Welsh Language Standards (2016)
- Wrexham County Borough Council's Council Plan (2020-2023)
- Wrexham County Borough Council's Welsh in Education Strategic Plan 2022-2031 (WESP)
- Learner Travel Wales Measure (2008)
- Wrexham County Borough Council's Transport Policy
- Pupil Level Annual School Census (PLASC) data (January 2024)
- Management Information Systems (MIS) statistical data
- Information from the Council's Transport Department

Appendix 2-Surrounding Schools Data

It is anticipated that other schools in the surrounding area (i.e. within a two mile walking distance from Froncysyllte CP, Garth CP and Pentre CIW VC Primary School) should not be adversely affected.

Froncysyllte CP

Primary School	Walking Distance	Language Medium	Building Condition Category	Capacity	Number on Roll (F/T)	Surplus Capacity
Pentre CIW VC Primary School	1.400	English medium	B	70	42	28
Ysgol Acrefair	1.513	English medium	C	210	189	21
Ysgol Min Y Ddol	1.552	Welsh medium	B	140	105	35
Ysgol Cefn Mawr	1.587	English medium	B	210	179	31
Garth CP	1.856	English medium	B	105	45	60

Garth CP

Primary School	Walking Distance	Language Medium	Building Condition Category	Capacity	Number on Roll (F/T)	Surplus Capacity
Ysgol Acrefair	1.310	English medium	C	210	189	21
Ysgol Min Y Ddol	1.642	Welsh medium	B	140	105	35
Ysgol Cefn Mawr	1.677	English medium	B	210	179	31
Froncysyllte CP	1.856	English medium	B	84		

Pentre CIW VC Primary School

Primary School	Walking Distance	Language Medium	Building Condition Category	Capacity	Number on Roll (F/T)	Surplus Capacity
Froncysyllte CP	1.400	English medium	B	84		
Ysgol Min Y Ddol	1.548	Welsh medium	B	140	105	35
Ysgol Cefn Mawr	1.575	English medium	B	210	179	31
Ysgol Y Waun	1.924	English medium	C	350	288	62

Pentre CIW VC Primary School

Capacity	70	PAN	10	Nursery Capacity	10
-----------------	----	------------	----	-------------------------	----

Total Number of Pupils on Roll (PLASC Data)

Year	Total F/T	Surplus Places	Percentage
2020/21	54	16	22.86%
2021/22	61	9	12.86%
2022/23	51	19	27.14%
2023/24	44	26	37.14%
2024/25	42	28	40.00%

**Please note the above pupil data does not take into account pupils in Resourced Provision or nursery pupils. Source-PLASC. Nursery pupil numbers and numbers of pupils in Resourced Provision should not be included.*

Pupil Projections

Year	Total F/T	Surplus Places	Percentage
2025/26	39	31	44.29%
2026/27	33	37	52.86%
2027/28	26	44	62.86%
2028/29	26	44	62.86%
2029/30	26	44	62.86%

**Please note the above pupil data does not take into account pupils in Resourced Provision or nursery pupils. Source-PLASC. Nursery pupil numbers and numbers of pupils in Resourced Provision should not be included.*

Ysgol Acrefair

Capacity	210	PAN	30	Nursery Capacity	30
-----------------	-----	------------	----	-------------------------	----

Total Number of Pupils on Roll (PLASC Data)

Year	Total F/T	Surplus Places	Percentage
2020/21	199	11	5.24%
2021/22	194	16	7.62%
2022/23	191	19	9.05%
2023/24	186	24	11.43%
2024/25	189	21	10.00%

**Please note the above pupil data does not take into account pupils in Resourced Provision or nursery pupils. Source-PLASC. Nursery pupil numbers and numbers of pupils in Resourced Provision should not be included*

Pupil Projections

Year	Total F/T	Surplus Places	Percentage
2025/26	179	31	14.76%
2026/27	168	42	20.00%
2027/28	165	45	21.43%
2028/29	164	46	21.90%
2029/30	157	53	25.24%

**Please note the above pupil data does not take into account pupils in Resourced Provision or nursery pupils. Source-PLASC. Nursery pupil numbers and numbers of pupils in Resourced Provision should not be included*

Ysgol Min Y Ddol

Capacity	140	PAN	20	Nursery Capacity	20
-----------------	-----	------------	----	-------------------------	----

Total Number of Pupils on Roll (PLASC Data)

Year	Total F/T	Surplus Places	Percentage
2020/21	94	46	32.86%
2021/22	101	39	27.86%
2022/23	103	37	26.43%
2023/24	100	40	28.57%
2024/25	105	35	25.00%

**Please note the above pupil data does not take into account pupils in Resourced Provision or nursery pupils. Source-PLASC. Nursery pupil numbers and numbers of pupils in Resourced Provision should not be included*

Pupil Projections

Year	Total F/T	Surplus Places	Percentage
2025/26	108	32	22.86%
2026/27	121	19	13.57%
2027/28	129	11	7.86%
2028/29	129	11	7.86%
2029/30	129	11	7.86%

**Please note the above pupil data does not take into account pupils in Resourced Provision or nursery pupils. Source-PLASC. Nursery pupil numbers and numbers of pupils in Resourced Provision should not be included*

Ysgol Cefn Mawr

Capacity	210	PAN	30	Nursery Capacity	30
-----------------	-----	------------	----	-------------------------	----

Total Number of Pupils on Roll (PLASC Data)

Year	Total F/T	Surplus Places	Percentage
2020/21	161	49	23.33%
2021/22	160	50	23.81%
2022/23	171	39	18.57%
2023/24	174	36	17.14%
2024/25	179	31	14.76%

**Please note the above pupil data does not take into account pupils in Resourced Provision or nursery pupils. Source-PLASC. Nursery pupil numbers and numbers of pupils in Resourced Provision should not be included*

Pupil Projections

Year	Total F/T	Surplus Places	Percentage
2025/26	162	48	22.86%
2026/27	152	58	27.62%
2027/28	149	61	29.05%
2028/29	147	63	30.00%
2029/30	145	65	30.95%

**Please note the above pupil data does not take into account pupils in Resourced Provision or nursery pupils. Source-PLASC. Nursery pupil numbers and numbers of pupils in Resourced Provision should not be included*

Garth CP

Capacity	105	PAN	15	Nursery Capacity	15
-----------------	-----	------------	----	-------------------------	----

Total Number of Pupils on Roll (PLASC Data)

Year	Total F/T	Surplus Places	Percentage
2020/21	46	59	56.19%
2021/22	55	50	47.62%
2022/23	51	54	51.43%
2023/24	43	62	59.05%
2024/25	45	60	57.14%

**Please note the above pupil data does not take into account pupils in Resourced Provision or nursery pupils. Source-PLASC. Nursery pupil numbers and numbers of pupils in Resourced Provision should not be included.*

Pupil Projections

Year	Total F/T	Surplus Places	Percentage
2025/26	49	56	53.33%
2026/27	51	54	51.43%
2027/28	46	59	56.19%
2028/29	45	60	57.14%
2029/30	42	63	60.00%

**Please note the above pupil data does not take into account pupils in Resourced Provision or nursery pupils. Source-PLASC. Nursery pupil numbers and numbers of pupils in Resourced Provision should not be included.*

Ysgol Y Waun

Capacity	350	PAN	50	Nursery Capacity	50
-----------------	-----	------------	----	-------------------------	----

Total Number of Pupils on Roll (PLASC Data)

Year	Total F/T	Surplus Places	Percentage
2020/21	298	52	14.86%
2021/22	292	58	16.57%
2022/23	284	66	18.86%
2023/24	290	60	17.14%
2024/25	288	62	17.71%

**Please note the above pupil data does not take into account pupils in Resourced Provision or nursery pupils. Source-PLASC. Nursery pupil numbers and numbers of pupils in Resourced Provision should not be included.*

Pupil Projections

Year	Total F/T	Surplus Places	Percentage
2025/26	276	74	21.14%
2026/27	276	74	21.14%
2027/28	287	63	18.00%
2028/29	278	72	20.57%
2029/30	275	75	21.43%

**Please note the above pupil data does not take into account pupils in Resourced Provision or nursery pupils. Source-PLASC. Nursery pupil numbers and numbers of pupils in Resourced Provision should not be included.*

Froncysyllte CP

Capacity	84	PAN	12	Nursery Capacity	12
-----------------	----	------------	----	-------------------------	----

Total Number of Pupils on Roll (PLASC Data)

Year	Total F/T	Surplus Places	Percentage
2020/21	26	58	69.05%
2021/22	21	63	75.00%
2022/23	24	60	71.43%
2023/24	19	65	77.38%
2024/25	11	73	86.90%

**Please note the above pupil data does not take into account pupils in Resourced Provision or nursery pupils. Source-PLASC. Nursery pupil numbers and numbers of pupils in Resourced Provision should not be included.*

Pupil Projections

Year	Total F/T	Surplus Places	Percentage
2025/26	6	78	92.86%
2026/27	5	79	94.05%
2027/28	1	83	98.81%
2028/29	1	83	98.81%
2029/30	0	84	100.0%

**Please note the above pupil data does not take into account pupils in Resourced Provision or nursery pupils. Source-PLASC. Nursery pupil numbers and numbers of pupils in Resourced Provision should not be included.*