



Wrexham County Borough Council

Welsh Language Impact Assessment and Supporting Evidence

Prepared in accordance with Welsh Language Standards 88-92

**This Welsh Language Impact Assessment underpins
the Council's proposal to consult of the Dee Valley
Federation of Schools**

June 2025

Garth CP Garth Road Garth Trevor LL20 7UY	Froncysyllte CP Woodland Road Llangollen LL20 7SU	Pentre Church in Wales Voluntary Controlled Primary School Pentre Village, Chirk, LL14 5AW
---	--	---

This document is available in languages other than Welsh or English upon request. It is also available in accessible formats such as large print, Braille, BSL DVD and audio-CD upon request. To make a request for this document in another format or language, please email DeeValleyConsultation@wrexham.gov.uk or write to Dee Valley Consultation, Education, Crown Buildings, 31 Chester Street, Wrexham, LL13 8BG.

This remains a working document and is subject to change throughout the consultation period.



Introduction

Wrexham County Borough Council's School Organisation Framework (2017-2025) sets out the Council's vision and long-term strategic direction for developments in education provision.

Pending agreement from the Executive Board in September 2025, Wrexham County Borough Council is planning to carry out a formal consultation on the Dee Valley Federation of Schools. If approved, the consultation will run from **23rd September 2025 to 7th November 2025** to allow sufficient time for stakeholders to respond.

The Council has a duty to ensure that education provision reflects the changing patterns of population, and that our schools are based in the right location with accommodation and facilities fit to serve the needs of all learners. When considering how many school places are needed, consideration is given to the number of pupil places available, increasing and decreasing trends in admission numbers and the projected demand for pupil places in a school.

Where there is a high number of surplus school places, resources are being utilised in such a way that could be better used to improve the quality of education for all learners. A high number of surplus places makes planning and managing the school difficult, creating issues in managing infant class sizes and potentially leaving parts of the school unused which is not cost-effective.

The proposal to consult on the Dee Valley Federation of schools has not been taken lightly. The consultation will follow guidelines established by the Welsh Government and will involve key stakeholders as set out in the School Organisation Code 2018. The School Organisation Code (2018) requires Local Authorities to carry out a Welsh Language Impact Assessment to give due consideration to the effects of proposals on the Welsh Language. From the initial impact assessment exercise, it is anticipated that this proposal could have a positive effect on the Welsh language should more pupils choose Welsh medium education. There is one Welsh medium school within 2 miles of Froncysyllte CP (Ysgol Min y Ddol).

This document assesses the impact that the proposal may have on the Welsh Language and forms part of a number of impact assessments including: the Community, Transport, the Wellbeing of Future Generations and Equality. The assessment pulls together a range of relevant Welsh language data sources, statistics, information from Welsh Government and existing Council and Welsh Government policies and legislation. These must be considered in context and alongside mitigating factors as the Council determines whether to proceed with the outlined proposal.

Cymraeg 2050 Strategy

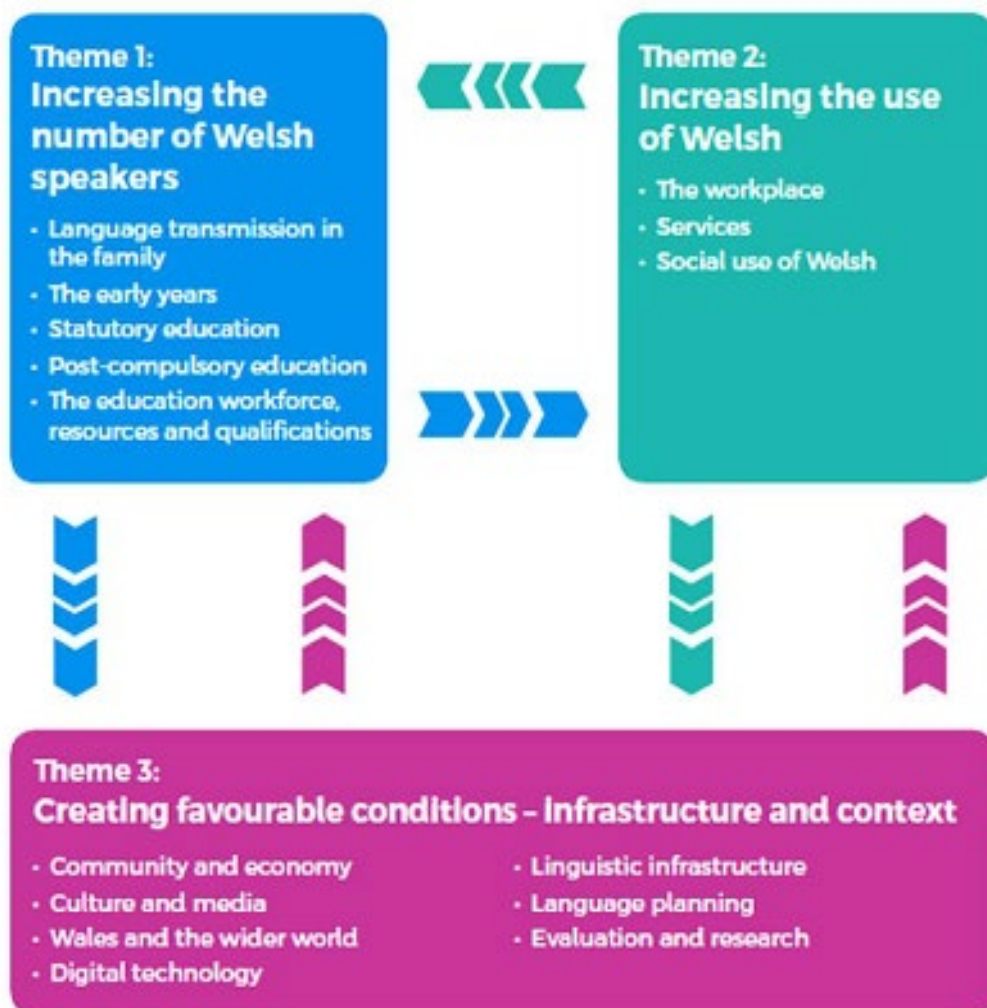
Cymraeg 2050 is the Welsh Government's strategy for the promotion and facilitation of the use of the Welsh language. It sets out a long-term approach to achieving a target of one million Welsh speakers by 2050. The aim of the strategy is to reach a position where the Welsh language is an integral part of all aspects of everyday life.

Wrexham Council's Welsh in Education Strategic Plan (2022-2031) (WESP) and Welsh Language Promotion Strategy (2022-2027) directly support the Welsh

Government's vision and will become the cornerstone of the Council's contribution towards meeting the target outlined in the Welsh Government's strategy.

Wrexham's Council Plan (2023-2028) includes the Welsh Language and Culture as a strategic planning principle. It recognises that Wales has two official languages, Welsh and English, and services and information should be equally available in both. The Council's internal business language is English, but all employees are supported and encouraged to develop their Welsh language skills. Services and information that the Council provides are available bilingually. The Council's 'Ensuring a Modern and Resilient Council' objective also reiterates our commitment to the Welsh Language Standards and ensures that we continue to adhere to its requirements.

This assessment includes the relevant requirements of a Welsh Language Assessment and considers the three main themes outlined in [Cymraeg 2050: A million Welsh speakers](#). Some of the standard questions within the Welsh language assessment and two of the three themes of Cymraeg 2050 may not be directly relevant to this proposal due to the language medium and provision medium of the schools in question, but as there is a possibility that Welsh-medium schools in the area may be affected by the proposal, they will be considered in full.



This picture above shows a flow chart of three different themes. Theme 1 is increasing the number of Welsh speakers (language transmission in the family, the early years, statutory education, post-compulsory education and the education workforce, resources and qualifications). Theme 2 is increasing the use of Welsh (the workplace, services, social use of Welsh). Theme 3 is creating favourable conditions-infrastructure and context (community and economy, culture and media, wales the wider world, digital technology, linguistic infrastructure, language planning, evaluation and research). As can be seen from the flow chart above All three themes outlined in Cymraeg 2050 have the possibility of being relevant, should more pupils choose Welsh-medium education as a result of any proposed changes.

The authority is also committed to raising the profile of the Welsh language and increasing participation in Welsh medium education in Wrexham. The proposal aligns with a number of objectives contained in the Council's Welsh in Education Strategic Plan (WESP), including:

- Increasing the number of pupils who receive their education through the medium of Welsh;
- Enabling children and young people to be able to use Welsh as a language for living;
- Enabling children and young people to develop confidence in bilingualism;
- Providing information and understanding of the advantages of being bilingual.
- Ensuring ALN provision through the medium of Welsh is equivalent to the provision available through the medium of English.
- Upskilling staff to be proficient in using Welsh within education settings.

The Proposal and Potential Impacts

The proposal is to consider the following 3 options and potential impacts on the Dee Valley Federation of Schools:

- **Option 1**-Maintain the Status Quo. This option would mean all 3 schools in the Dee Valley Federation would continue to operate as they do now.
- **Option 2**-Close Froncysyllte Community Primary School. This option would mean that Froncysyllte CP would close and current pupils would be offered a place at an alternative school.
- **Option 3**-Close all 3 schools in the Dee Valley Federation to create a single, amalgamated school on one site. This option would include the immediate closure of Froncysyllte in advance of the wider restructure.

Preferred Option

The preferred option is Option 2.

The level of surplus places at Froncysyllte CP is projected to continue. There is no data available to suggest that the number of pupils applying for a place at the school would exceed 84 in future years.

By bringing this proposal forward, the Council intends to address the decreasing demand for school places at Froncysyllte CP.

Option 1 has been discounted due to:

- Decreasing numbers of pupils applying for places at the school over a sustained period.
- Forecasts which suggest this trend will continue.
- The decrease in pupil numbers has impacted on the school's educational and financial sustainability and this needs to be addressed.

Option 3 has been discounted due to:

- An alternative suitable site is not available. Option 3 will therefore not be consulted on.

Why is the Council proposing the changes?

Factors that have been considered by the Council in deciding to consult on this proposal include:

- To ensure future sustainability of schools in the Dee Valley Federation.
- To enable pupils to attend alternative schools which would be better equipped to meet the new Curriculum for Wales.
- To enable pupils to attend alternative schools which would provide a wider range of educational and extra-curricular opportunities.
- To enable pupils to attend a school with a larger cohort, so that pupils can be taught in classes of a similar age group providing additional opportunities for peer support.
- To enable pupils to attend schools with better quality accommodation.
- To ensure efficiency of resource planning and management.
- To reduce the Council's overall surplus capacity in primary schools.
- To address the issue of low pupil numbers on roll and projected intake.
- To ensure that the Council complies with its duty to monitor the demand for school places and ensure viability of the school estate.
- To realise a financial saving accrued to the Dee Valley Federation budget.

The proposed changes would:

- Reduce the Council's overall surplus capacity in Wrexham's primary schools.
- Provide an appropriate solution to meet local demand for school places in the areas where the schools are located.
- Limit the impact on all schools, both locally and across the county.
- Support the sustainable growth of Welsh-medium education in line with the aspirations of the Council's Welsh in Education Strategic Plan and Cymraeg 2050.
- Enable pupils to attend alternative schools which would be better equipped to meet the new Curriculum for Wales.
- Enable pupils to attend alternative schools which would provide a wider range of educational and extra-curricular opportunities
- Enable pupils to attend a school with a larger cohort, so that pupils can be taught in class of a similar age group.
- Enable pupils to access additional opportunities for peer support.

- Provide curriculum consistency, familiarity of leadership approaches and continuity of care for local pupils.
- Improve standards of education to the benefit of all pupils in the area.

The Consultation Process

The School Organisation Code 2018, paragraph. 1.4 states that “*Where proposals affect schools where Welsh is a medium of instruction (for subjects other than Welsh) for some or all of the time, local authorities should carry out a Welsh Language Impact Assessment.*” As there is the possibility that this could affect Welsh-medium schools in the area, a Welsh Language Impact Assessment must be produced.

Paragraph 3.4 in the School Organisation Code 2018 states:

WESP

- *The extent to which the proposal would support the targets in the approved Welsh in Education Strategic Plan.* This information is contained in the Impacts and Mitigations section.
- *How the proposal would expand or reduce Welsh language provision. In case of the latter, set out why provision will be reduced.* This information is contained in the Impacts and Mitigations section.

The consultation document invites views and opinions to be submitted in respect of the proposal. As part of the consultation process the Council will undertake an online survey to seek views on the proposal, and to gather information on how consultees feel the proposal may impact on the Welsh language and its further development in the area.

The views of children and young people are key to the way education is delivered within our Local Authority. It is important that when bringing forward proposals, suitable arrangements are made to consult with pupils and, where possible, those pupils likely to attend the school. The Council firmly believe that the pupils of all the schools affected should be given the opportunity to make their views known about this proposal. A children and young people version of the consultation document and an online survey are made available to all children and young people who wish to participate in the consultation. In addition, a visit will be undertaken to meet with the School Councils at Froncysyllte CP, Garth CP and Pentre Church in Wales Voluntary Controlled School.

The Welsh Government’s School Organisation Code requires the Council to consult on its proposal and to publish a consultation report summarising any issues raised by consultees, the Council’s response to those issues and Estyn’s view of the overall merit of the proposal.

The proposal and the consultation report will be considered by Elected Members of the Council and should it be agreed to proceed with the plans consulted upon, then the next stage of the process will be to publish a statutory notice outlining the proposal. This would be published for a period of 28 days during which written objections may be submitted.

Where objections are received, an objection report will be published summarising the objections and the Council's response to those objections. Elected Members of the Council will consider the proposal in light of objections received when taking a decision as to whether or not the proposal is to be implemented.

The list of consultees includes Welsh language partner organisations, including the Welsh in Education Forum and the local authority consulting with all of its schools including Welsh-medium schools. The Welsh Language Commissioner will also be consulted.

Welsh language impact assessments must consider a range of factors including links to legislation and details of supporting evidence and mitigating factors. This assessment brings together supporting evidence from a number of sources of information, from relevant Council policies and strategies to national regulations and Census data, and information from Welsh Government in order to support Wrexham County Borough Council as it decides on the proposals regarding the Dee Valley Federation of Schools.

By considering the above information on wider Welsh language matters, Wrexham County Borough Council will be able to evidence conscience consideration in the decision-making process. Section 84 of The School Standards and Organisation Act 2013 requires Local Authorities to prepare a Welsh in Education Strategic Plan (WESP). Wrexham's WESP (2022-2031) details the plan to support and further develop Welsh language education in schools.

Welsh-Medium Education Provision in Wrexham

There are currently eight Welsh-medium primary schools, one dual-stream primary school and one 11-18 secondary school which includes a sixth form provision, that provide Welsh-medium education within Wrexham City.

A high percentage of pupils currently attending Welsh medium schools in Wrexham come from predominantly English speaking homes. Bilingualism is introduced at the earliest opportunity and the Local Authority is committed to ensuring that Welsh-medium education will be maintained and developed as the child/young person progresses.

As outlined in the Council's WESP, "the further development and expansion of Welsh medium education remains our vision and we recognise the importance of creating opportunities for all Wrexham pupils to become bilingual so that they emerge from our education system, proud of their identity and confident in using both languages" (WESP, page 5). Over recent years, the Council has strived to expand Welsh medium education across the borough in order to ensure that there are enough places for the pupils of Wrexham to access Welsh medium education should they wish to do so.

Pupil Projections and Surplus Places in Welsh-Medium Schools

The table below shows the distances from Froncysyllte CP, Garth CP and Pentre CIW VC Primary School to all of the Welsh-medium schools in Wrexham.

Name of School	Distance from Froncysyllte CP	Distance from Garth CP	Distance from Pentre CIW VC Primary School
Ysgol Llan y Pwll	9.521	9.318	9.440
Ysgol Plas Coch	8.739	8.536	8.806
Ysgol Bodhyfryd	8.472	8.269	8.384
Ysgol Bro Alun CP	10.341	10.138	10.408
Ysgol Bryn Tabor	8.391	8.188	8.560
Ysgol ID Hooson	4.371	4.168	4.620
Ysgol Min Y Ddol	1.552	1.642	1.548
Ysgol Cynddelw	5.445	6.886	6.610
Ysgol Llanarmon Dyffryn Ceiriog	10.413	11.625	11.577

The tables below shows the pupil projections and the number of surplus places available in Welsh-medium primary schools across the County Borough over the next five years.

School Name	Year	Pupil Projections Full Time Pupils Only	Surplus Places
Ysgol Bro Alun CP	2025/2026	242	73
Ysgol Bro Alun CP	2026/2027	225	90
Ysgol Bro Alun CP	2027/2028	232	83
Ysgol Bro Alun CP	2028/2029	229	86

**Based on PAN 315*

School Name	Year	Pupil Projections Full Time Pupils Only	Surplus Places
Ysgol Bryn Tabor	2025/2026	182	133
Ysgol Bryn Tabor	2026/2027	176	139
Ysgol Bryn Tabor	2027/2028	171	144
Ysgol Bryn Tabor	2028/2029	173	142

**Based on PAN 315*

School Name	Year	Pupil Projections Full Time Pupils Only	Surplus Places
Ysgol Plas Coch	2025/2026	273	41
Ysgol Plas Coch	2026/2027	282	33
Ysgol Plas Coch	2027/2028	294	21
Ysgol Plas Coch	2028/2029	291	24

**Based on PAN 315*

School Name	Year	Pupil Projections Full Time Pupils only minus special class	Surplus Places
Ysgol Bodhyfryd	2025/2026	211	209
Ysgol Bodhyfryd	2026/2027	201	219
Ysgol Bodhyfryd	2027/2028	194	226
Ysgol Bodhyfryd	2028/2029	178	242

**Based on PAN 420*

School Name	Year	Pupil Projections Full Time Pupils Only	Surplus Places
Ysgol ID Hooson	2025/2026	193	122

School Name	Year	Pupil Projections Full Time Pupils Only	Surplus Places
Ysgol ID Hooson	2026/2027	190	125
Ysgol ID Hooson	2027/2028	191	124
Ysgol ID Hooson	2028/2029	194	121

**Based on PAN 315*

School Name	Year	Pupil Projections Full Time Pupils Only	Surplus Places
Ysgol Min Y Ddol	2025/2026	108	32
Ysgol Min Y Ddol	2026/2027	121	19
Ysgol Min Y Ddol	2027/2028	129	11
Ysgol Min Y Ddol	2028/2029	129	11

**Based on PAN 140*

School Name	Year	Pupil Projections Full Time Pupils Only	Surplus Places
Ysgol Cynddelw	2025/2026	73	53
Ysgol Cynddelw	2026/2027	71	55
Ysgol Cynddelw	2027/2028	72	54
Ysgol Cynddelw	2028/2029	69	57

**Based on PAN 126*

School Name	Year	Pupil Projections Full Time Pupils Only	Surplus Places
Ysgol Llanarmon Dyffryn Ceiriog	2025/2026	20	29
Ysgol Llanarmon Dyffryn Ceiriog	2026/2027	18	31
Ysgol Llanarmon Dyffryn Ceiriog	2027/2028	16	33
Ysgol Llanarmon Dyffryn Ceiriog	2028/2029	16	33

**Based on PAN 49*

**Please note that pupil projections and surplus places are not currently available for Ysgol Llan Y Pwll; the new Welsh medium school which has recently opened on the old Borrás Infants site.*

Based on projections, all of these schools have a number of surplus places for parents wishing to access Welsh medium education or their children. In line with the Council's transport policy, free school transport would also be provided to pupils who wish to access Welsh medium education if they meet the distance criteria. In order to qualify for free home to school transport, a child would need to be accessing Welsh medium education in the nearest suitable Welsh medium school to their home address and this would need to be 2 miles away or more. Distances are measured using the Council's GIS mapping system.

In addition, there are a number of projected surplus places in Welsh medium schools across the borough as a whole which parents could access if they wanted to. In line with recommendations in the WESP 2022-2031, the "emphasis will be on filling the places we already have within the system" (page 35) before focusing on expanding Welsh-medium education further.

Welsh Medium Education Projects-Background

Ysgol Plas Coch

In 2016, a £1 million modernisation scheme was implemented at the school, the aim to permanently increase the numbers of Welsh medium places from 210 to 315. An

extension to the school provides three new classrooms providing permanent spaces for learning to replace temporary accommodation.

Ysgol Bro Alun

In 2013, we opened a new 210 place Welsh medium school in Wrexham, Ysgol Bro Alun. This school was so successful in drawing pupils we have since expanded this site to accommodate 315 places as of September 2019. The project offered opportunity for continued growth, offered a greater choice to parents and met the desired increase in demographic spread of Welsh medium schools.

Ysgol ID Hooson

Alongside the successful expansion at Ysgol Bro Alun CP in Gwersyllt, the Council has also been successful in securing an outline funding bid, under the Welsh Government's Welsh Capital funding stream, to expand provision at Ysgol ID Hooson in Rhosllanerchrugog. Initially, this was for a two classroom extension to replace existing mobiles on site. Since this successful bid, the Council has, in support of the Welsh in Education Strategic Plan, requested additional capital funding to secure £6,300,000 to permanently extend the existing primary school building with an additional seven classrooms. The scheme would also allow for considerable alterations for example to accommodate a studio hall, a larger relocated kitchen and extension to the Foundation Phase areas. Welsh Government are providing 100% grant funding for this Capital grant. The extension will provide permanent spaces for learning to replace temporary accommodation and will temporarily house wrap around child care. This again creates further capacity and provides the opportunity for Ysgol ID Hooson to become a 420 capacity primary school if required.

Ysgol Llan Y Pwll

The Local Authority has increased the geographic spread of Welsh medium schools in the borough by opening a new Welsh medium school at the old Borrás Infants site. The project involved extending and extensively remodelling the previous Borrás Infants site in order to accommodate a new Welsh medium school with a capacity of 210 and a 30 place nursery. Funding was also secured through the Childcare grant and a new Childcare provision was created on site. By increasing the geographic spread of Welsh medium provision, the Council has ensured that Welsh medium education is increasingly accessible to parents and has also ensured that the time pupils need to travel to a local Welsh medium school is reduced. Ysgol Llan y Pwll opened in September 2022 for reception and nursery children. The aims of the above projects were:

- To continue to generate greater access and wider participation within Welsh medium at a Primary level for Wrexham learners.
- To continue increased participation and retention within the Welsh medium Primary sector.
- To address the demand for Welsh medium places in Wrexham.
- To increase the demographic spread of Welsh medium primary provision in Wrexham.
- To ensure increased efficiency and effectiveness to provide the best value for money.

- Supporting the Welsh Government's vision and strategy of a million Welsh speakers by 2050.
- Support the aims and objectives within Wrexham's Welsh Language Promotion Strategy (2022-2027).

Secondary Welsh Medium Education

In terms of secondary Welsh medium education, the Local Authority operates a 'Trochi' Programme for late comers to Welsh medium secondary education. This programme enables pupils to receive intensive Welsh language support in Ysgol Morgan Llwyd; Wrexham's Welsh-medium secondary school. The programme begins during the second half of the summer term, whilst the pupils are still in Year 6, and continues throughout Year 7. Based on the success of the Trochi Programme we have actively pursued funding grants to build on these successes.

The Local Authority have also increased the available capacity at the Morgan Llwyd site by 240 places by creating a stand-alone sixth form provision under the Sustainable Communities for Learning Programme at a cost of £1,734,544. This work was completed in May 2019. In the future, further consultation will be required to formally increase the admission number as required, utilising the space freed by the new sixth form provision.

Welsh in Education Strategic Plan (WESP)

The vision: The year 2050: The Welsh language is thriving, the number of speakers has reached a million, and it is used in every aspect of life. Among those who do not speak Welsh there is goodwill and a sense of ownership towards the language and a recognition by all of its contribution to the culture, society and economy of Wales. Our vision is to secure favourable circumstances throughout the country that support language acquisition and use of Welsh language skills. We want to see an increase in language transmission in the family, early introduction of Welsh to every child and an education system that provides Welsh language skills for all.

Having recognised the appetite for Welsh medium education in Wrexham, we are exceptionally pleased at the progress we have made to date and commit to its further development during the coming 10 years.

Wrexham Council have been very successful in meeting demand for Welsh medium school places and indeed have grown considerably prior to and across the lifetime of the previous WESP. In 2013, we opened a new 210 place Welsh medium school Ysgol Bro Alun, this school was so successful in drawing pupils we have since expanded the provision at this site to accommodate 315 pupil places.

In addition, we have expanded provision across a number of Welsh medium schools where the sites allowed. Since 2019, we have increased capacity in primary by 165 places or 8.7%. The WESP 2022-31, is a vital part of the Council's vision for increasing and improving the planning of the provision of Welsh medium education in Wrexham County Borough Council, to enable all learners to develop their Welsh language skills and use the language confidently in everyday life. It both complements and assists in facilitating the national vision for the Welsh language, to have 1 million Welsh speakers by 2050.

Welsh Language Promotion Strategy

Under Welsh Language Standard 145 local authorities had to develop and implement 5 year promotion strategies, working with partner organisations to promote the Welsh language and to facilitate the use of the Welsh language more widely in their respective areas. Amongst other matters the strategy had to include the following:

- A target (in terms of the percentage of speakers in the area) for increasing or maintaining the number of Welsh speakers in the area by the end of the 5-year period concerned;
- A statement setting out how they intend to reach that target; and conduct a review of the strategy and publish a revised version on their website within 5 years of publishing a strategy (or of publishing a revised strategy).

Welsh-medium education, whether in the form of full Welsh-medium provision via Welsh schools, or the teaching of Welsh as a second language in English-medium schools, directly supports this aim and intrinsically links this strategy with the WESP.

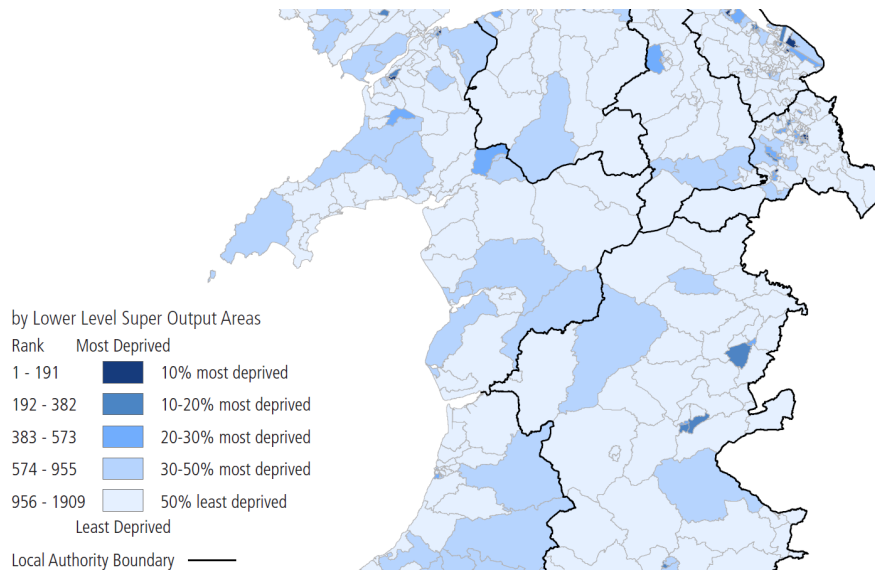
Social Deprivation Considerations

In the Welsh Index of Multiple Deprivation 2019 it was reported that Wrexham Local Authority contains 85 LSOAs (4.5% of the 1909 total LSOAs in Wales) Of the 0 - 10 % most deprived LSOAs in Wales within the overall domain: 6 are within the Wrexham Local Authority. Which accounts for 7.1% of those in the Local Authority and 0.3% of those in Wales. [WIMD-Wrexham](#)

The proposal to review 3 English medium primary schools in a Federation, and potentially reduce the number of schools from 3 to 2, could have a positive impact on parental choice and access to Welsh medium education in terms of the perceived positive opportunities that a potential place in a Welsh Language provision might offer their children.

There are both Welsh language and socio-economic considerations to consider. A number of possible mitigations to limit adverse impacts is outlined in the Impacts and Mitigations section.

Welsh Index of Multiple Deprivation (WIMD)



Source: Welsh Government November 2019

Welsh Language Skills in Wrexham (from Census 2021)

Welsh Language Skill	Percentage
Speak, read or write Welsh	14.5%
Understand spoken Welsh only	5.4%
Speak but cannot read or write Welsh	1.9%
Speak and read but cannot write Welsh	0.9%
Read but cannot speak or write Welsh	1.4%
Write but cannot speak or read Welsh	0.2%
Can read and write but cannot speak Welsh	0.6%
No skills in Welsh	80.1%

According to the 2021 Census, over half of the population of Wrexham were born in Wales (67.9%). 14.5% of people in Wrexham can speak, read or write Welsh. The ability to speak, read and write Welsh is at its highest in the rural ward of Rhosllanerchrugog and Johnstown South (23.1%) and is at its lowest in the rural ward of Bangor on Dee, Overton and Penley (9.4%). 12.2% of the population of Wrexham can speak Welsh compared to a Wales average of 17.8%.

Policy WL1: Welsh Language and the Social and Cultural Fabric of Communities

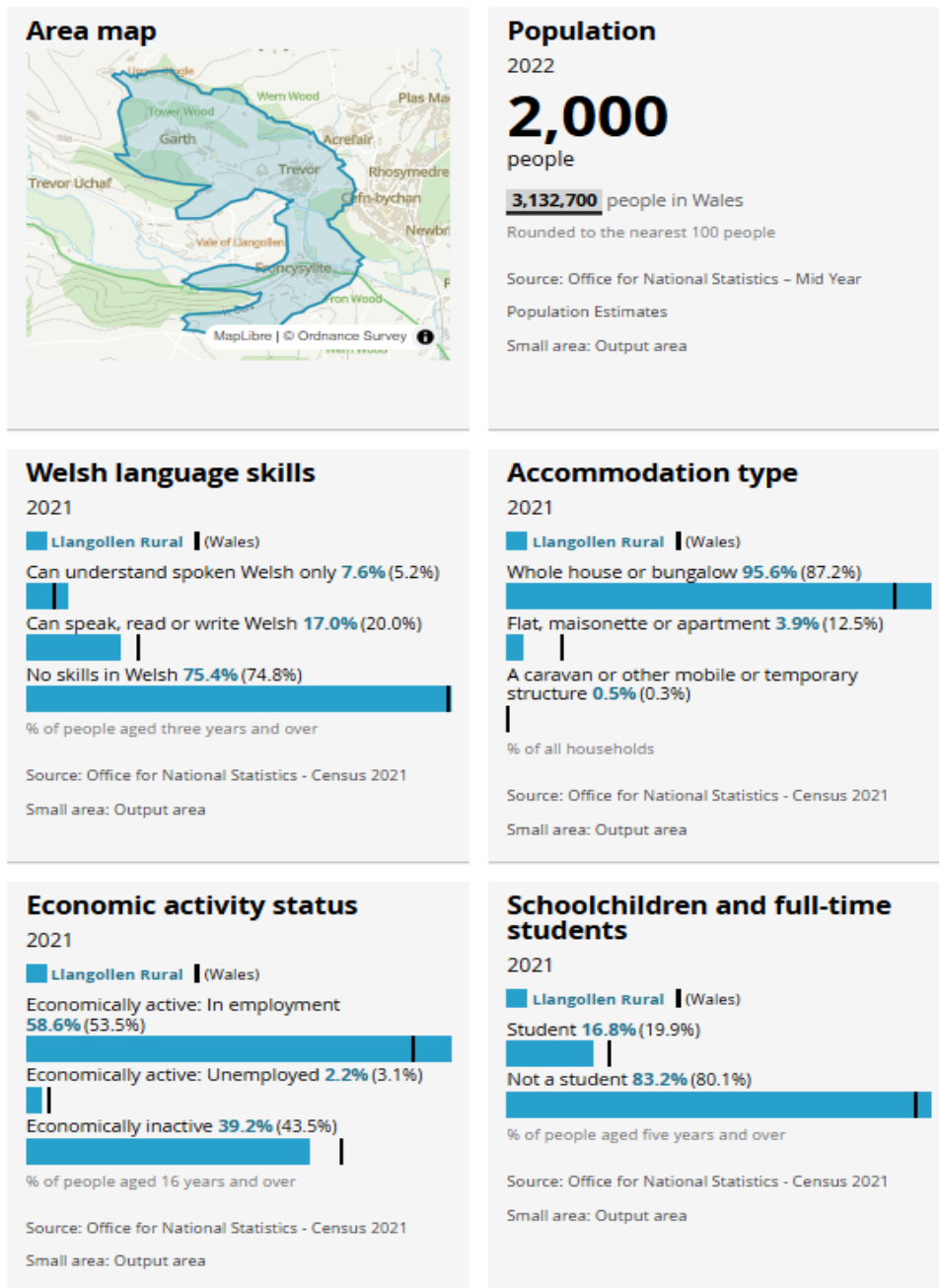
Within the Welsh Language Sensitive Areas identified on the Proposals Map (communities of Ceiriog Ucha, Coedpoeth, Glyntraian, Llansantffraid Glyn Ceiriog, Minera, Pen-y-cae and Rhosllanerchrugog) the following windfall developments will be subject to a Welsh Language Impact Assessment by WCBC. Where the Impact Assessment demonstrates that the development may have an adverse impact, proposals must be accompanied by a Welsh Language Action Plan setting out the measures to be taken to protect, promote and enhance the Welsh Language and culture:

- All residential applications for 5 or more units in the Ceiriog Valley (Ceiriog Ucha, Glyntraian, Llansantffraid Glyn Ceiriog communities) and Minera community;
- All residential applications for 15 or more units elsewhere within the Welsh Language Sensitive Areas.

The implementation of any measures identified within the Language Action Plan shall be secured either by planning conditions or, where necessary, by planning obligations.

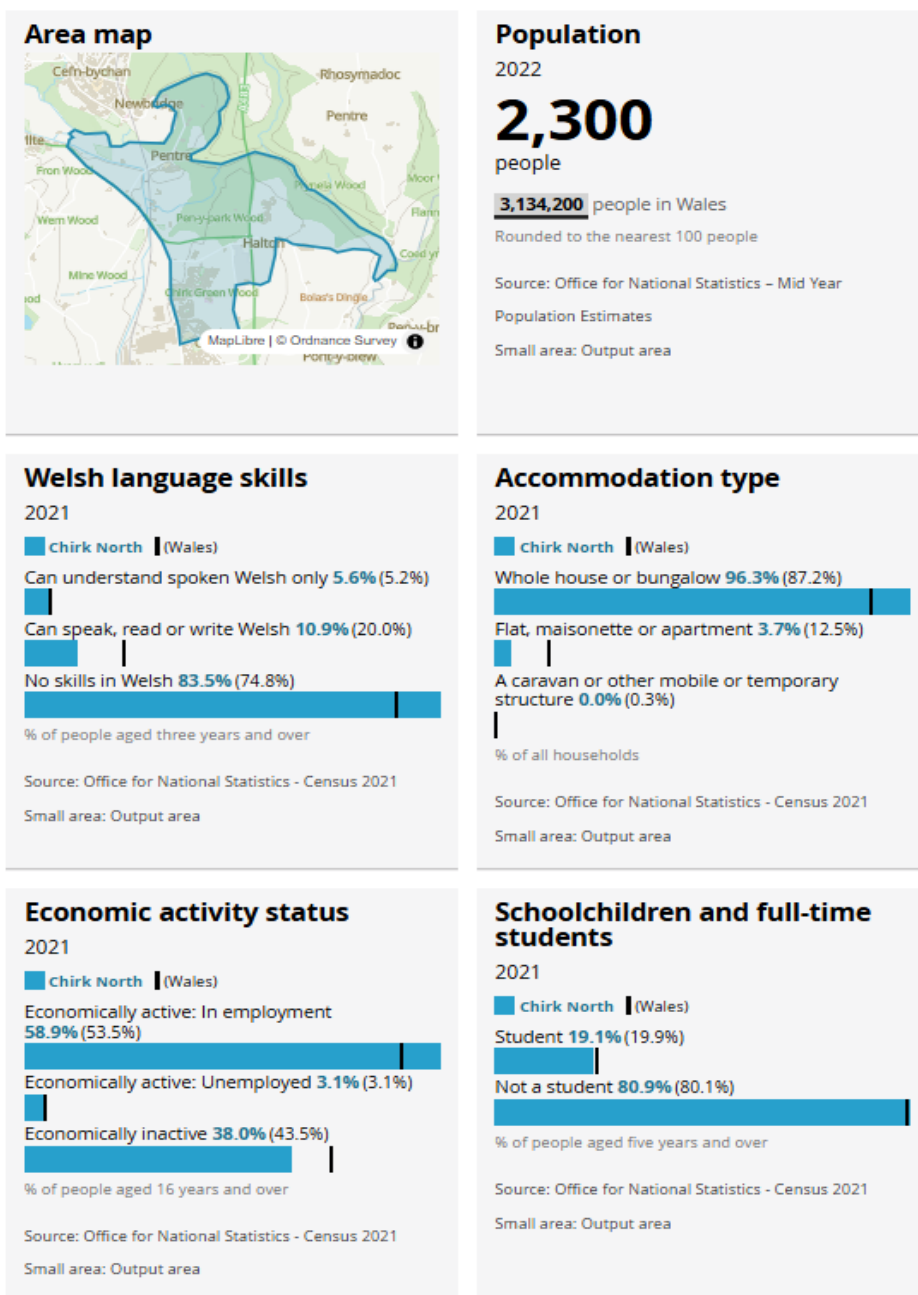
Ward Profile-Llangollen Rural

Llangollen Rural



Garth CP and Froncysyllte CP are within the Llangollen Rural Ward. The picture shows the area map and information on population, Welsh language skills, accommodation type, economic activity and the percentage of school children and full time students. For further information on the Llangollen Rural Census Data, please visit [Custom Area Profile-Llangollen Rural](#) on the Office for National Statistics website.

Chirk North



Pentre CIW VC Primary School is within the Chirk North Ward. The picture shows the area map and information on population, Welsh language skills, accommodation type, economic activity and the percentage of school children and full time students. For further information on the Chirk North Census Data, please visit [Custom Area Profile-Chirk North](#) the Office for National Statistics website.

Assessment of Potential Impacts on the Welsh Language

The impact of the proposed options has been considered, as shown in the tables below. If an impact is anticipated to be beneficial to the Welsh language, it has been identified as positive. If an impact is anticipated to be potentially detrimental to the Welsh language, it has been identified as negative and if it does not significantly impact the Welsh language it has been identified as neutral.

Option 1-Maintain Status Quo

Description of Impact	Potential Impact	Comment	Link to WESP Objective
Using Welsh in the Community	Neutral	No change and therefore no impact.	N/A
The language medium of the schools	Neutral	No change and therefore no impact.	N/A
Access to Welsh-medium education	Neutral	No change and therefore no impact.	N/A
Number of Welsh speaking teaching staff	Neutral	No change and therefore no impact.	N/A

Option 2-Close Froncysyllte CP

Description of Impact	Anticipated Impact (Positive/Negative/Neutral)	Comment	Link to WESP Objective
Using Welsh in the Community	Neutral	No anticipated change to use of Welsh in the community as a result of the proposal.	N/A
The language of the schools	Neutral	Schools within the Federation are English-medium schools. The language medium of the 2 remaining schools would remain unchanged should the proposal to close Froncysyllte CP go ahead.	N/A
Access to Welsh-medium education.	Neutral / Positive	<p>The proposal concerns the potential closure of an English-medium school. Access to Welsh-medium education could remain unchanged or it could be increased should more pupils choose to be educated through the medium of Welsh as a result of the proposal.</p> <p>The local authority has proactively created a programme of events and promotional</p>	<p>Links to WESP Outcomes 1 and 2</p> <p><i>More nursery children/ three year olds receive their education through the medium of Welsh.</i></p> <p><i>More reception class children/ five year olds receive their education through the medium of Welsh.</i></p>

		<p>materials to promote the Welsh medium offer of school places and will continue to raise awareness regarding the Welsh medium provision available to them. Significant investment in Welsh medium education provision in Wrexham, including new and refurbished buildings, we are now in the position where 100% first preference admission places have been met in Welsh-medium education.</p> <p>The Welsh language immersion offer provides a 'taster course' during the Summer term of Year 6 so that learners from English medium provisions can decide whether to transfer to a Welsh Medium secondary school. From September 2023 we have offered 'Trochi' sessions for all English medium schools.</p>	
--	--	--	--

		<p>The late-comers provision for primary aged pupils has been developed significantly during the last two years. This has resulted in an increase in numbers of pupils accessing Welsh medium education.</p>	
<p>Number of Welsh speaking teaching staff.</p>	<p>Neutral /Positive</p>	<p>The proposal concerns the potential closure of an English-medium school. An increase in the number of Welsh speaking teaching staff could remain unchanged or it could be increased should more pupils choose to be educated through the medium of Welsh as a result of the proposal.</p> <p>The opening of our new Trochi unit has provided the opportunity to use the immersion provision to upskill staff. Staff are accessing 'confidence building' training programmes at our primary language acquisition unit at Ysgol Min y Ddol.</p>	<p>Links to WESP Outcome 7</p> <p><i>Increase the number of teaching staff able to teach Welsh (as a subject) and teach through the medium of Welsh.</i></p>

		<p>We intend to use the new Trochi unit at Ysgol Morgan Llwyd to expand this provision and upskill English medium teachers in order to build their confidence and inspire them to transfer their enthusiasm to the learners, thus contributing to an interest in the language and possibly transferring to Welsh Medium.</p> <p>The addition of a permanent base for the provision will allow the service to see through its long term strategy for development and continue to contribute to the Cymraeg 2050 targets.</p> <p>As a base to host Teaching workshops for school staff and/or teachers from other schools and/or the parents of our pupils, the Trochi provision has the opportunity to directly impact the core WESP aim of “To improve provision in English medium schools in order</p>	
--	--	---	--

		<p>to significantly raise standards of Welsh language and promote bilingualism". It will also offer the opportunity for teachers from other schools to be supported in their use of Welsh and is in support of the council's wider WESP outcome to "Increase the number of teaching staff able to teach Welsh (as a subject) and teach through the medium of Welsh".</p> <p>Cwrs CAMAU available to all early years' practitioners. This is a free course to learn Welsh, designed for staff in Cylchoedd Meithrin, day nurseries and child minders. This is a self-study online course at Entry level (so it is suitable for beginners and those who've attended Taster Courses).</p> <p>Sabbatical courses are available to non-Welsh speaking teaching and</p>	
--	--	---	--

		support staff. Teaching and support staff from across Wrexham access this opportunity for professional development each year.	
--	--	--	--

Option 3-Close all 3 schools in the Dee Valley Federation to create a single, amalgamated school on one site. This option would include the immediate closure of Froncysyllte in advance of the wider restructure.

Description of Impact	Anticipated Impact (Positive/Negative/Neutral)	Comment	Link to WESP Objective
Using Welsh in the Community	Neutral	No anticipated change to use of Welsh in the community as a result of the proposal.	N/A
The language of the schools	Neutral	Schools within the Federation are English-medium schools. The language medium of the 2 remaining schools would remain unchanged should the proposal to close Froncysyllte CP go ahead.	N/A
Access to Welsh-medium education.	Neutral / Positive	The proposal concerns the potential closure of an English-medium school. Access to Welsh-medium education could remain unchanged or it could be increased should more pupils	Links to WESP Outcomes 1 and 2 <i>More nursery children/ three year olds receive their education through the</i>

		<p>choose to be educated through the medium of Welsh as a result of the proposal.</p> <p>The local authority has proactively created a programme of events and promotional materials to promote the Welsh medium offer of school places and will continue to raise awareness regarding the Welsh medium provision available to them. Significant investment in Welsh medium education provision in Wrexham, including new and refurbished buildings, we are now in the position where 100% first preference admission places have been met in Welsh-medium education.</p> <p>The Welsh language immersion offer provides a 'taster course' during the Summer term of Year 6 so that learners from English medium</p>	<p><i>medium of Welsh.</i></p> <p><i>More reception class children/ five year olds receive their education through the medium of Welsh.</i></p>
--	--	--	---

		<p>provisions can decide whether to transfer to a Welsh Medium secondary school. From September 2023 we have offered 'Trochi' sessions for all English medium schools.</p> <p>The late-comers provision for primary aged pupils has been developed significantly during the last two years. This has resulted in an increase in numbers of pupils accessing Welsh medium education.</p>	
Number of Welsh speaking teaching staff.	Neutral / Positive	<p>The proposal concerns the potential closure of an English-medium school. An increase in the number of Welsh speaking teaching staff could remain unchanged or it could be increased should more pupils choose to be educated through the medium of Welsh as a result of the proposal.</p> <p>The opening of our new Trochi unit has provided the opportunity to use the immersion</p>	<p>Links to WESP Outcome 7</p> <p><i>Increase the number of teaching staff able to teach Welsh (as a subject) and teach through the medium of Welsh.</i></p>

		<p>provision to upskill staff. Staff are accessing 'confidence building' training programmes at our primary language acquisition unit at Ysgol Min y Ddol.</p> <p>We intend to use the new Trochi unit at Ysgol Morgan Llwyd to expand this provision and upskill English medium teachers in order to build their confidence and inspire them to transfer their enthusiasm to the learners, thus contributing to an interest in the language and possibly transferring to Welsh Medium.</p> <p>The addition of a permanent base for the provision will allow the service to see through its long term strategy for development and continue to contribute to the Cymraeg 2050 targets.</p> <p>As a base to host Teaching workshops for school staff and/or teachers from other</p>	
--	--	--	--

		<p>schools and/or the parents of our pupils, the Trochi provision has the opportunity to directly impact the core WESP aim of “To improve provision in English medium schools in order to significantly raise standards of Welsh language and promote bilingualism”. It will also offer the opportunity for teachers from other schools to be supported in their use of Welsh and is in support of the council’s wider WESP outcome to “Increase the number of teaching staff able to teach Welsh (as a subject) and teach through the medium of Welsh”.</p> <p>Cwrs CAMAU available to all early years’ practitioners. This is a free course to learn Welsh, designed for staff in Cylchoedd Meithrin, day nurseries and child minders. This is a self-study online course at Entry</p>	
--	--	--	--

		<p>level (so it is suitable for beginners and those who've attended Taster Courses).</p> <p>Sabbatical courses are available to non-Welsh speaking teaching and support staff. Teaching and support staff from across Wrexham access this opportunity for professional development each year.</p>	
--	--	---	--

Conclusion and Summary

This Welsh Language Impact Assessment seeks to explore the extent to which the proposal supports the WESP targets and how the proposal could expand or reduce Welsh medium provision. An initial assessment has found that this proposal would either result in a neutral impact or a positive impact by potentially expanding Welsh medium education, should more parents choose Welsh medium education for pupils. We do not foresee any significant adverse impact on Welsh Medium education or on the Welsh language as a result of the proposal to review 3 English medium primary schools in a Federation, and potentially reduce the number of schools from 3 to 2.

Appendix A-Relevant Welsh Language Standards

Standard Number	Class of Standard	Standard	Date
88	Policy Making	<p>When you formulate a new policy, or review or revise an existing policy, you must consider what effects, if any (whether positive or adverse), the policy decision would have on:</p> <ul style="list-style-type: none"> a) opportunities for persons to use the Welsh language, and b) treating the Welsh language no less favourably than the English language. 	30/03/2016
89	Policy Making	<p>When you formulate a new policy, or review or revise an existing policy, you must consider how the policy could be formulated (or how an existing policy could be changed) so that the policy decision would have positive effects, or increased positive effects, on:</p> <ul style="list-style-type: none"> a) opportunities for persons to use the Welsh language, and b) treating the Welsh language no less favourably than the English language. 	30/03/2016
90	Policy Making	<p>When you formulate a new policy, or review or revise an existing policy, you must consider how the policy</p>	30/03/2016

		<p>could be formulated (or how an existing policy could be changed) so that the policy decision would not have adverse effects, or so that it would have decreased adverse effects, on:</p> <ul style="list-style-type: none"> a) opportunities for persons to use the Welsh language, and b) treating the Welsh language no less favourably than the English language. 	
91	Policy Making	<p>When you publish a consultation document which relates to a policy decision, the document must consider, and seek views on, the effects (whether positive or adverse) that the policy decision under consideration would have on:</p> <ul style="list-style-type: none"> a) opportunities for persons to use the welsh language, and b) treating the Welsh language no less favourably than the English language. 	30/03/2016
92	Policy Making	<p>Policy Making When you publish a consultation document which relates to a policy decision the document must consider, and seek views on, how the policy under consideration could be formulated or revised so that it</p>	30/03/2016

		would have positive effects, or increased positive effects, on <ul style="list-style-type: none">a) opportunities for persons to use the Welsh language, andb) treating the Welsh language no less favourably than the English language.	
--	--	---	--

Appendix B-School Organisation Code 2018-Welsh Language Impact Assessments

The Welsh Government takes the view that the requirement for assessments should not be overly burdensome and does not consider that it is necessary to commission such work from external consultants. Local authorities are already under a duty to carry out equality impact assessments which could provide the basis for the impact assessments specified in this guidance.

Welsh Language Impact

These notes are not prescriptive or exhaustive but the impact assessment in respect of the Welsh language might include the following:

- Information on the language category of the school;
- Information on the language category of any alternative school;
- Information about standards in the Welsh language in the school and any alternative school;
- Information about after school activities which provide additional opportunities to use Welsh in the school and any alternative school (e.g. the Urdd, Mentrau Iaith clubs);
- Information about whether the school provides facilities for members of the community to learn Welsh, or undertake activities through the medium of Welsh, and where any alternative facilities could be provided;
- Whether it might be appropriate to provide additional after school facilities at any alternative school to further secure standards in the Welsh language;
- How parents' and pupils' engagement with any alternative school and any specific language enhancement it offers could be supported (e.g. how pupils will be helped to participate in activities provided by the Urdd, Mentrau Iaith);
- Observations provided by the local authority's Welsh medium education forum.

Information on how the proposal fits with the authority's Welsh in Education Strategic Plan and any future actions that will be needed in consequence of the change to continue to comply with the scheme or meet targets in the scheme.

Appendix C-Relevant Policies and Legislation

Below is a hyperlinked list of Council, Welsh Government and other relevant policies, legislation and information, as noted throughout this assessment.

Wrexham County Borough Council Welsh Language Policies and Strategies

- [Wrexham Welsh in Education Strategic Plan](#)
- [Wrexham Welsh Language Promotion Strategy](#)
- [Wrexham Welsh Language Standards Compliance Notice](#)
- [Local Planning Guidance Note 31 The Welsh Language and Welsh Communities](#)

Welsh Government Legislation and Regulations

- [Welsh-medium and bilingual education](#)
- [Welsh Language \(Wales\) Measure 2011](#)
- [Welsh in Education Strategic Plans \(Wales\) Regulations 2019](#)
- [Wellbeing of Future Generations Act 2015 Guidance](#)
- [Cymraeg 2050](#)
- [Planning Policy Wales: TAN 20](#)

Other Information

- [Stats Wales: Welsh language 2011 by Local Authority](#)
- [Stats Wales: Pupils being taught Welsh as a first language](#)
- [Stats Wales: WIMD 2019 Local Authority Analysis](#)

Appendix D-Welsh Language Partner Organisations

This is a list of organisations who support and promote the Welsh language and Welsh-medium education, either voluntarily or through their corporate governance and/or strategic role in ensuring compliance with legislative requirements.

Many are partners on Wrexham County Borough Council Welsh in Education Strategic Language Forum.

- [Menter Iaith Fflint a Wrecsam](#)
- [Mudiad Ysgol Meithrin](#)
- [Wrexham Public Services Board](#)
- [Rhieni Dros Addysg Gymraeg](#)
- [Urdd Gobaith Cymru – Fflint a Wrecsam](#)
- [GwE \(the Regional Education Consortium for North Wales\)](#)
- [Estyn](#)
- [Welsh Language Commissioner](#)
- [Cymdeithas yr Iaith Gymraeg \(the Welsh Language Society\)](#)